



AIRSERVICES AUSTRALIA

Sydney Airport
Operational Statistics
May 2011

Produced by Environmental Services

PREVIEW

Sydney Airport Operational Statistics Report Preview

May 2011

Total Runway Movements (excluding helicopter operations) (refer pages 5-10)

There were a total of 25,679 aircraft movements this month (daily average 828.35). Last month there were a total of 25,039 movements (daily average 834.63) and for the same month last year there were a total of 25,472 movements (daily average 821.68).

Mode Utilisation (refer pages 11 & 13)

Individual mode use in excess of 9 hours occurred on 22 days this month, Sodprops on 1 day, Mode 5 on 2 days, Mode 9 on 7 days, Mode 10 on 12 days. Crossing runway modes (including Sodprops) were used for 32.87% of non Curfew hours.

Mode 15 was introduced during RESA works (commenced October 2008) and ceased being used at the completion of RESA (April 2010)

Runway End Impact Long Term Operating Plan (LTOP) Targets (refer page 12)

LTOP targets - North 17% - South 55% - East 13% - West 15%

The two fundamental factors which influence the selection of a runway and therefore the LTOP targets are forecast or prevailing weather and traffic levels. This month's results are as follows:

North 30.56% - This result is above the LTOP target and below the previous month (33.12%)

South 53.39% - This result is below the LTOP target and above the previous month (51.95%)

East 14.05% - This result is above the LTOP target and above the previous month (10.91%)

West 1.99% - This result is below the LTOP target and below the previous month (3.99%)

16 Precision Runway Monitor (PRM) Operations (refer page 14)

This procedure was used on 09, 25, 26, 30 and 31 May for a total of 9 hours and 10 minutes (ATIS time)

Noise Enquiry Service (refer pages 15-20)

A total of 2570 complaints, comments and enquiries were received as follows:

2197 Sydney suburbs complaints from 177 complainants

36 Sydney suburbs comments and enquiries

336 non Sydney Airport or Sydney suburbs (NSW only) complaints, comments and enquiries

**Noise Enquiry Service
Environmental Services
Airservices Australia**

telephone 1-800-802-584

facsimile (02) 9556-6641

e-mail neu@airservicesaustralia.com

internet www.airservicesaustralia.com

Table of Contents

Preview	i
Table of Contents.....	1
Sydney Airport Runways.....	2
Runway Modes of Operation	3
Preferred Runway Selection	4
Runway Movement Summary – All Aircraft	5
Runway Movement Summary – Jet Aircraft only	6
Runway Movement Summary – Non Jet Aircraft only	7
Hourly Runway Movement Summary– All Movements.....	8
Hourly Runway Movement Summary – Arrivals	9
Hourly Runway Movement Summary – Departures.....	10
Mode Utilisation Summary / Cumulative Mode Utilisation from 1 January 2011	11
Runway End Impact.....	12
Daily Mode Usage.....	13
PRM Statistics.....	14
Noise Enquiry Service.....	15
Complaints Graphs – Complaints vs Complainants.....	16
Complaints History / Top Complaint Suburbs	17
Complaint Density by Suburb	18
Recorded Complaints vs Complainants, by Suburb	19
Recorded Complaints vs Complainants, by Locations/Airports Other Than Sydney	20
Jet Flight Path Movements * (1 – 31 May 2011).....	21
Jet Flight Path Movements * (1 June 2010 - 31 May 2011).....	22
Jet Aircraft Respite (R60) * (1 – 31 May 2011)	23
Jet Aircraft Respite (R60) * (1 June 2010 - 31 May 2011).....	24
Jet Flight Path Movements (Explanation)	25
Jet Aircraft Respite (R60) (Explanation)	26
Measured Daily N70 Values	27

This report is available on the Internet at Airservices Australia website at

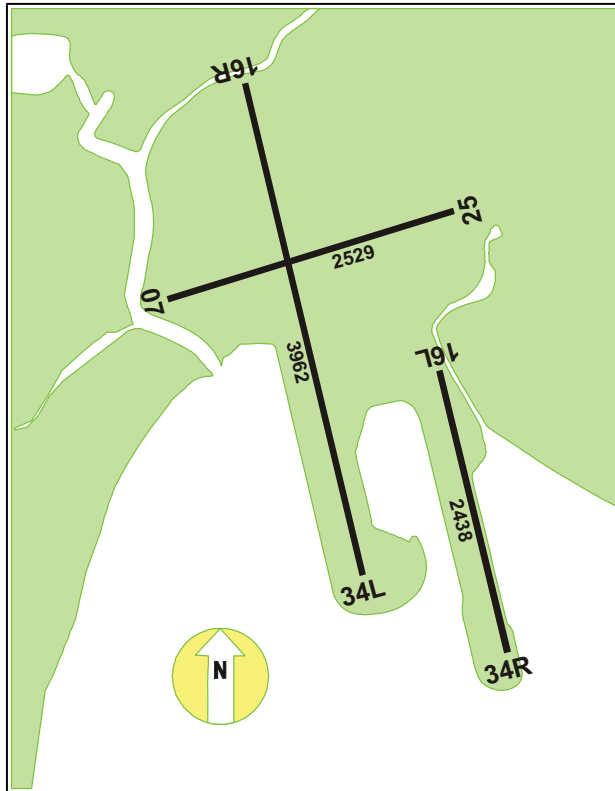
www.airservicesaustralia.com

click on “Projects & Services”, “Reports & Statistics” **then**

“Sydney Airport Operational Statistics”.

* This information is produced using Airservices Australia’s Noise and Flight Path Monitoring System and the TNIP software package developed by the Department of Infrastructure, Transport, Regional Development and Local Government.

Sydney Airport Runways



Runway numbers refer to the direction an aircraft is flying.

Runway 16R/34L	Main North-South runway
Runway 16L/34R	Parallel North-South runway.
Runway 07/25	East-West runway.

Runways 16L and 16R Used by aircraft landing or taking off towards the South.
(16=approx. 160 degrees magnetic bearing)

Runway 34L Used by aircraft landing or taking off towards the North.
(34=approx. 340 degrees magnetic bearing)

Runway 34R Used by aircraft landing toward the north and taking off to the East.

Runway 07 Used by aircraft landing or taking off towards the East.
(07=approx. 070 degrees magnetic bearing)

Runway 25 Used by aircraft landing or taking off towards the West.
(25=approx. 250 degrees magnetic bearing)

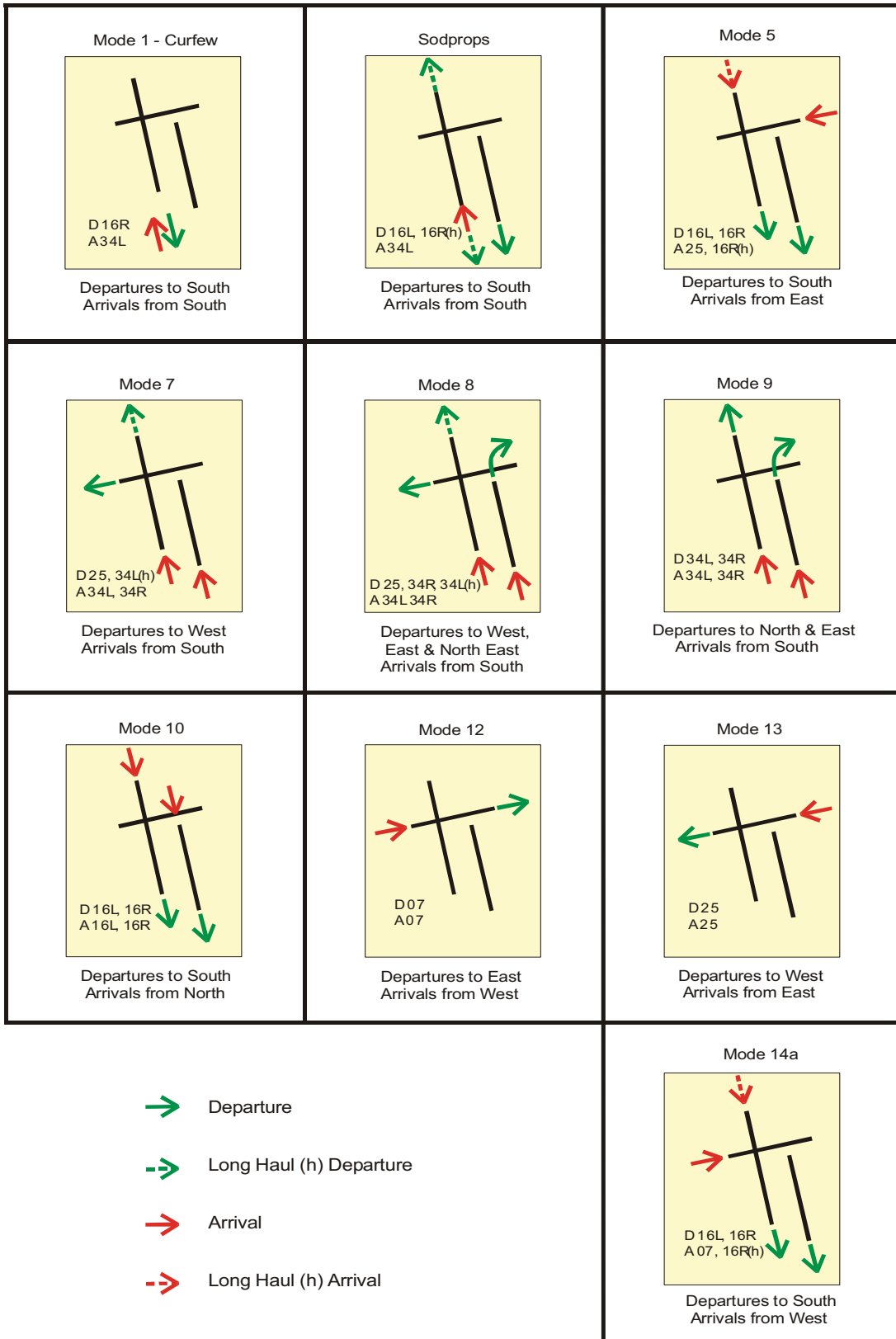
Movements over the North =16L(arr) + 16R(arr) + 34L(dep)

Movements over the South =16L(dep) + 16R(dep) + 34L(arr) + 34R(arr)

Movements over the East =07(dep) + 25(arr) + 34R(dep)

Movements over the West =07(arr) + 25(dep)

Runway Modes of Operation



Sydney Airport Preferred Runway Selection

Effective from 1 July 2010 (LOA 3181 V1)

Monday to Friday		
2300 to 0600	1.	Curfew – Departures 16R / Arrivals 34L (Mode 1)
0600 to 0700	1.	SODPROPS - Departures 16L / Arrivals 34L
	2.	Departures 16L&R / Arrivals 34L (Shoulder Curfew). If traffic permits.
	3.	Departures 34R, 25 & 34L / Arrivals 34L&R (Mode 8), or Departures 25 / Arrivals 34L&R (Mode 7), or Departures 16L&R / Arrivals 25 (Mode 5), or Departures 16L&R / Arrivals 07 (Mode 14A)
	4.	34 (Mode 9) or 16 (Mode 10)
	5.	07 (Mode 12) or 25 (Mode 13)
0700 to 2245	1.	SODPROPS - Departures 16L / Arrivals 34L
	2.	Departures 16L&R / Arrivals 07 (Mode 14A), or Departures 34R, 25 & 34L / Arrivals 34L&R (Mode 8), or Departures 25 / Arrivals 34L&R (Mode 7), or Departures 16L&R / Arrivals 25 (Mode 5)
	3.	34 (Mode 9) or 16 (Mode 10)
	4.	07 (Mode 12) or 25 (Mode 13)
2245 to 2300	1.	SODPROPS - Departures 16L (Mandatory) / Arrivals 34L
	2.	Departures 16L&R (Mandatory) / Arrivals 34L (Shoulder Curfew) unless there would be significant delays to either departing or arriving aircraft or traffic complexity requires a variation or weather conditions preclude the use of 34L.
	3.	Departures 16L&R / Arrivals 25 (Mode 5), or Departures 16L&R / Arrivals 07 (Mode 14A)
	4.	16 (Mode 10)

Rwy 34 and Rwy 16 Parallel Runway operations should only be considered for use if required for traffic management purposes during the following hours:

0700 to 1100 Monday to Saturday

0800 to 1100 Sunday

1500 to 2000 Sunday to Friday

In order to take advantage of suitable traffic dispositions, variations to these times will occur.

20 knot crosswind and 5 knot downwind criteria apply to all dry runway conditions

This is not an operational document. It has been prepared for information purposes only and is subject to change without notice.

Saturday and Sunday		
2300 to 0600	1.	Curfew – Departures 16R / Arrivals 34L (Mode 1)
0600 to 0700 Saturday	1.	SODPROPS - Departures 16L / Arrivals 34L
0600 to 0800 Sunday	2.	Departures 16L&R / Arrivals 34L (Shoulder Curfew). If traffic permits.
	3.	Departures 16L&R / Arrivals 25 (Mode 5), or Departures 16L&R / Arrivals 07 (Mode 14A), or Departures 34R, 25 & 34L / Arrivals 34L&R (Mode 8), or Departures 25 / Arrivals 34L&R (Mode 7)
	4.	34 (Mode 9) or 16 (Mode 10)
	5.	07 (Mode 12) or 25 (Mode 13)
0700 to 2200 Saturday	1.	SODPROPS - Departures 16L / Arrivals 34L
0800 to 2200 Sunday	2.	Departures 16L&R / Arrivals 07 (Mode 14A), or Departures 34R, 25 & 34L / Arrivals 34L&R (Mode 8), or Departures 25 / Arrivals 34L&R (Mode 7), or Departures 16L&R / Arrivals 25 (Mode 5)
	3.	34 (Mode 9) or 16 (Mode 10)
	4.	07 (Mode 12) or 25 (Mode 13)
2200 to 2245	1.	SODPROPS - Departures 16L (Mandatory) / Arrivals 34L
	2.	Departures 16L&R (Mandatory) / Arrivals 34L (Shoulder Curfew) unless there would be significant delays to either departing or arriving aircraft or traffic complexity requires a variation or weather conditions are not suitable.
	3.	Departures 16L&R / Arrivals 25 (Mode 5)
	4.	Departures 16L&R / Arrivals 07 (Mode 14A)
	5.	Departures 34R, 25 & 34L / Arrivals 34L&R (Mode 8)
	6.	Departures 25 / Arrivals 34L&R (Mode 7)
	7.	34 (Mode 9) or 16 (Mode 10)
	8.	07 (Mode 12) or 25 (Mode 13)
2245 to 2300	1.	SODPROPS - Departures 16L (Mandatory) / Arrivals 34L
	2.	Departures 16L&R (Mandatory) / Arrivals 34L (Shoulder Curfew) unless there would be significant delays to either departing or arriving aircraft or traffic complexity requires a variation or weather conditions preclude the use of 34L.
	3.	Departures 16L&R / Arrivals 25 (Mode 5), or Departures 16L&R / Arrivals 07 (Mode 14A)
	4.	16 (Mode 10)

Runway Movement Summary – All Aircraft

Date	Runway 07			Runway 16 Left			Runway 16 Right			Runway 25			Runway 34 Left			Runway 34 Right			Unknown Runway			Day
	Arr	Dep	Total	Arr	Dep	Total	Arr	Dep	Total	Arr	Dep	Total	Arr	Dep	Total	Arr	Dep	Total	Arr	Dep	Total	
01-May-11	0	0	0	116	108	224	201	281	482	58	0	58	5	0	5	0	0	0	0	0	0	769
02-May-11	0	0	0	68	84	152	118	173	291	62	10	72	110	88	198	75	82	157	0	0	0	870
03-May-11	0	0	0	150	123	273	251	302	553	18	0	18	9	0	9	0	0	0	0	0	0	853
04-May-11	1	0	1	151	124	275	233	309	542	42	0	42	6	0	6	0	0	0	0	0	0	866
05-May-11	1	0	1	166	143	309	213	311	524	50	2	52	27	3	30	0	0	0	0	0	0	916
06-May-11	0	0	0	135	121	256	210	318	528	91	2	93	6	0	6	0	0	0	0	0	0	883
07-May-11	0	0	0	0	136	136	0	2	2	0	0	0	296	124	420	49	70	119	0	0	0	677
08-May-11	1	0	1	13	124	137	25	71	96	40	1	41	231	111	342	55	78	133	0	0	0	750
09-May-11	0	0	0	161	117	278	258	318	576	12	0	12	5	0	5	0	0	0	0	0	0	871
10-May-11	0	0	0	116	124	240	173	299	472	138	5	143	8	0	8	0	0	0	0	0	0	863
11-May-11	0	0	0	0	0	0	0	7	7	4	92	96	257	166	423	159	163	322	0	0	0	848
12-May-11	0	0	0	0	117	117	0	6	6	1	0	1	363	178	541	92	147	239	0	0	0	904
13-May-11	0	0	0	0	0	0	2	7	9	0	118	118	271	156	427	179	168	347	0	0	0	901
14-May-11	1	0	1	53	90	143	111	243	354	177	1	178	6	0	6	0	0	0	0	0	0	682
15-May-11	0	0	0	0	135	135	0	2	2	0	17	17	321	144	465	61	97	158	0	0	0	777
16-May-11	1	0	1	0	44	44	0	2	2	1	47	48	290	171	461	142	168	310	0	0	0	866
17-May-11	0	0	0	64	76	140	103	186	289	78	17	95	113	63	176	60	73	133	0	0	0	833
18-May-11	1	0	1	72	90	162	89	103	192	0	46	46	178	104	282	84	86	170	0	0	0	853
19-May-11	1	0	1	0	43	43	0	7	7	0	0	0	314	192	506	130	205	335	0	0	0	892
20-May-11	1	0	1	0	22	22	0	3	3	0	0	0	296	195	491	145	220	365	0	0	0	882
21-May-11	2	0	2	9	73	82	44	43	87	0	9	9	227	109	336	61	90	151	0	0	0	667
22-May-11	2	0	2	0	5	5	2	2	4	0	11	11	253	180	433	114	194	308	0	0	0	763
23-May-11	1	0	1	0	0	0	0	5	5	0	25	25	279	187	466	153	222	375	0	0	0	872
24-May-11	1	0	1	71	77	148	99	191	290	92	1	93	107	69	176	58	81	139	0	0	0	847
25-May-11	0	0	0	157	128	285	223	301	524	39	1	40	4	0	4	0	0	0	0	0	0	853
26-May-11	0	0	0	134	138	272	197	310	507	111	1	112	8	0	8	1	0	1	0	0	0	900
27-May-11	1	0	1	90	100	190	118	217	335	87	3	90	110	68	178	51	68	119	0	0	0	913
28-May-11	0	0	0	20	60	80	40	180	220	182	13	195	76	27	103	30	51	81	0	0	0	679
29-May-11	0	0	0	113	82	195	158	236	394	20	24	44	56	19	75	22	28	50	0	0	0	758
30-May-11	2	0	2	167	122	289	238	299	537	14	0	14	0	0	0	0	0	0	0	0	0	842
31-May-11	49	0	49	148	120	268	214	292	506	0	0	0	6	0	6	0	0	0	0	0	0	829
Total	66	0	66	2174	2726	4900	3320	5026	8346	1317	446	1763	4238	2354	6592	1721	2291	4012	0	0	0	25679

Runway Movement Summary – Jet Aircraft Only

Date	Runway 07			Runway 16 Left			Runway 16 Right			Runway 25			Runway 34 Left			Runway 34 Right			Unknown Runway			Day
	Arr	Dep	Total	Arr	Dep	Total	Arr	Dep	Total	Arr	Dep	Total	Arr	Dep	Total	Arr	Dep	Total	Arr	Dep	Total	
01-May-11	0	0	0	82	78	160	166	222	388	53	0	53	2	0	2	0	0	0	0	0	0	603
02-May-11	0	0	0	41	54	95	89	127	216	51	8	59	96	61	157	40	69	109	0	0	0	636
03-May-11	0	0	0	98	82	180	201	233	434	13	0	13	6	0	6	0	0	0	0	0	0	633
04-May-11	0	0	0	94	86	180	184	235	419	38	0	38	6	0	6	0	0	0	0	0	0	643
05-May-11	0	0	0	104	101	205	168	237	405	44	1	45	24	2	26	0	0	0	0	0	0	681
06-May-11	0	0	0	85	82	167	162	240	402	69	0	69	5	0	5	0	0	0	0	0	0	643
07-May-11	0	0	0	0	125	125	0	1	1	0	0	0	239	85	324	31	59	90	0	0	0	540
08-May-11	1	0	1	11	100	111	23	55	78	37	0	37	184	69	253	35	72	107	0	0	0	587
09-May-11	0	0	0	106	78	184	201	245	446	12	0	12	3	0	3	0	0	0	0	0	0	645
10-May-11	0	0	0	72	82	154	133	228	361	111	3	114	6	0	6	0	0	0	0	0	0	635
11-May-11	0	0	0	0	0	0	0	6	6	3	67	70	204	110	314	99	132	231	0	0	0	621
12-May-11	0	0	0	0	99	99	0	5	5	1	0	1	278	101	379	56	121	177	0	0	0	661
13-May-11	0	0	0	0	0	0	1	6	7	0	87	87	218	96	314	109	138	247	0	0	0	655
14-May-11	0	0	0	35	69	104	89	201	290	146	0	146	3	0	3	0	0	0	0	0	0	543
15-May-11	0	0	0	0	116	116	0	0	0	0	16	16	263	88	351	42	84	126	0	0	0	609
16-May-11	0	0	0	0	39	39	0	2	2	1	28	29	232	111	343	87	139	226	0	0	0	639
17-May-11	0	0	0	45	48	93	77	143	220	61	13	74	92	44	136	36	59	95	0	0	0	618
18-May-11	0	0	0	49	64	113	68	69	137	0	40	40	139	69	208	53	73	126	0	0	0	624
19-May-11	0	0	0	0	37	37	0	5	5	0	0	0	245	121	366	85	167	252	0	0	0	660
20-May-11	0	0	0	0	21	21	0	3	3	0	0	0	233	122	355	93	179	272	0	0	0	651
21-May-11	0	0	0	5	68	73	32	33	65	0	9	9	192	76	268	39	75	114	0	0	0	529
22-May-11	0	0	0	0	5	5	0	0	0	0	9	9	212	120	332	81	165	246	0	0	0	592
23-May-11	0	0	0	0	0	0	0	3	3	0	21	21	216	117	333	101	182	283	0	0	0	640
24-May-11	0	0	0	43	53	96	80	141	221	73	0	73	84	45	129	34	67	101	0	0	0	620
25-May-11	0	0	0	104	88	192	169	228	397	34	0	34	3	0	3	0	0	0	0	0	0	626
26-May-11	0	0	0	88	94	182	151	233	384	84	1	85	7	0	7	0	0	0	0	0	0	658
27-May-11	0	0	0	60	73	133	82	160	242	71	1	72	90	45	135	31	56	87	0	0	0	669
28-May-11	0	0	0	12	50	62	35	153	188	144	10	154	63	18	81	20	40	60	0	0	0	545
29-May-11	0	0	0	80	59	139	125	180	305	19	21	40	53	16	69	18	23	41	0	0	0	594
30-May-11	0	0	0	105	85	190	194	227	421	11	0	11	0	0	0	0	0	0	0	0	0	622
31-May-11	38	0	38	90	80	170	174	221	395	0	0	0	5	0	5	0	0	0	0	0	0	608
Total	39	0	39	1409	2016	3425	2604	3842	6446	1076	335	1411	3403	1516	4919	1090	1900	2990	0	0	0	19230

Runway Movement Summary – Non Jet Aircraft Only ¹

Date	Runway 07			Runway 16 Left			Runway 16 Right			Runway 25			Runway 34 Left			Runway 34 Right			Unknown Runway			Day
	Arr	Dep	Total	Arr	Dep	Total	Arr	Dep	Total	Arr	Dep	Total	Arr	Dep	Total	Arr	Dep	Total	Arr	Dep	Total	
01-May-11	0	0	0	34	30	64	35	59	94	5	0	5	3	0	3	0	0	0	0	0	0	166
02-May-11	0	0	0	27	30	57	29	46	75	11	2	13	14	27	41	35	13	48	0	0	0	234
03-May-11	0	0	0	52	41	93	50	69	119	5	0	5	3	0	3	0	0	0	0	0	0	220
04-May-11	1	0	1	57	38	95	49	74	123	4	0	4	0	0	0	0	0	0	0	0	0	223
05-May-11	1	0	1	62	42	104	45	74	119	6	1	7	3	1	4	0	0	0	0	0	0	235
06-May-11	0	0	0	50	39	89	48	78	126	22	2	24	1	0	1	0	0	0	0	0	0	240
07-May-11	0	0	0	0	11	11	0	1	1	0	0	0	57	39	96	18	11	29	0	0	0	137
08-May-11	0	0	0	2	24	26	2	16	18	3	1	4	47	42	89	20	6	26	0	0	0	163
09-May-11	0	0	0	55	39	94	57	73	130	0	0	0	2	0	2	0	0	0	0	0	0	226
10-May-11	0	0	0	44	42	86	40	71	111	27	2	29	2	0	2	0	0	0	0	0	0	228
11-May-11	0	0	0	0	0	0	0	1	1	1	25	26	53	56	109	60	31	91	0	0	0	227
12-May-11	0	0	0	0	18	18	0	1	1	0	0	0	85	77	162	36	26	62	0	0	0	243
13-May-11	0	0	0	0	0	0	1	1	2	0	31	31	53	60	113	70	30	100	0	0	0	246
14-May-11	1	0	1	18	21	39	22	42	64	31	1	32	3	0	3	0	0	0	0	0	0	139
15-May-11	0	0	0	0	19	19	0	2	2	0	1	1	58	56	114	19	13	32	0	0	0	168
16-May-11	1	0	1	0	5	5	0	0	0	0	19	19	58	60	118	55	29	84	0	0	0	227
17-May-11	0	0	0	19	28	47	26	43	69	17	4	21	21	19	40	24	14	38	0	0	0	215
18-May-11	1	0	1	23	26	49	21	34	55	0	6	6	39	35	74	31	13	44	0	0	0	229
19-May-11	1	0	1	0	6	6	0	2	2	0	0	0	69	71	140	45	38	83	0	0	0	232
20-May-11	1	0	1	0	1	1	0	0	0	0	0	0	63	73	136	52	41	93	0	0	0	231
21-May-11	2	0	2	4	5	9	12	10	22	0	0	0	35	33	68	22	15	37	0	0	0	138
22-May-11	2	0	2	0	0	0	2	2	4	0	2	2	41	60	101	33	29	62	0	0	0	171
23-May-11	1	0	1	0	0	0	0	2	2	0	4	4	63	70	133	52	40	92	0	0	0	232
24-May-11	1	0	1	28	24	52	19	50	69	19	1	20	23	24	47	24	14	38	0	0	0	227
25-May-11	0	0	0	53	40	93	54	73	127	5	1	6	1	0	1	0	0	0	0	0	0	227
26-May-11	0	0	0	46	44	90	46	77	123	27	0	27	1	0	1	1	0	1	0	0	0	242
27-May-11	1	0	1	30	27	57	36	57	93	16	2	18	20	23	43	20	12	32	0	0	0	244
28-May-11	0	0	0	8	10	18	5	27	32	38	3	41	13	9	22	10	11	21	0	0	0	134
29-May-11	0	0	0	33	23	56	33	56	89	1	3	4	3	3	6	4	5	9	0	0	0	164
30-May-11	2	0	2	62	37	99	44	72	116	3	0	3	0	0	0	0	0	0	0	0	0	220
31-May-11	11	0	11	58	40	98	40	71	111	0	0	0	1	0	1	0	0	0	0	0	0	221
Total	27	0	27	765	710	1475	716	1184	1900	241	111	352	835	838	1673	631	391	1022	0	0	0	6449

(1) Includes miscellaneous General Aviation aircraft - refer Noise And Flight Path Monitoring System Sydney Quarterly Report for more detail

Hourly Runway Movement Summary – All Movements ¹

Date	0:00	1:00	2:00	3:00	4:00	5:00	6:00	7:00	8:00	9:00	10:00	11:00	12:00	13:00	14:00	15:00	16:00	17:00	18:00	19:00	20:00	21:00	22:00	23:00	Total
01-May-11	0	1	1	0	1	2	28	40	46	47	47	47	46	27	55	49	61	63	64	58	41	27	17	1	769
02-May-11	0	0	0	0	1	3	43	64	74	57	65	58	51	35	52	51	49	60	61	58	31	30	23	4	870
03-May-11	2	2	2	2	2	3	42	69	66	66	56	59	46	27	51	50	47	55	57	55	39	29	22	4	853
04-May-11	1	1	0	2	2	2	40	68	75	54	56	59	41	33	52	56	53	63	62	54	37	27	25	3	866
05-May-11	1	1	1	3	2	5	41	64	69	66	59	56	45	40	58	60	55	67	71	57	39	29	23	4	916
06-May-11	2	0	1	3	1	4	44	66	68	67	60	56	40	41	49	51	55	66	63	59	34	29	21	3	883
07-May-11	1	0	1	0	0	3	32	47	69	52	60	51	42	31	40	43	41	37	41	38	22	16	10	0	677
08-May-11	0	0	1	0	0	3	27	34	50	45	47	47	42	36	45	50	53	60	59	64	37	26	24	0	750
09-May-11	1	1	0	1	0	3	44	66	74	58	65	60	44	32	54	50	51	63	58	57	35	27	22	5	871
10-May-11	2	2	2	2	2	2	44	67	75	61	53	62	43	34	49	47	59	61	65	48	30	25	21	7	863
11-May-11	1	0	0	3	1	3	39	66	76	55	62	54	42	29	49	55	51	55	68	57	24	31	23	4	848
12-May-11	2	0	0	4	1	3	39	63	73	57	65	54	48	38	48	59	55	65	65	66	37	29	29	4	904
13-May-11	2	1	2	3	0	3	41	69	63	63	58	57	44	38	55	57	58	67	60	65	46	28	19	2	901
14-May-11	2	1	1	2	1	2	31	51	64	57	56	52	46	25	42	48	36	36	43	35	24	16	9	2	682
15-May-11	0	0	0	2	0	3	26	34	49	46	51	54	43	33	48	56	49	69	65	63	34	32	19	1	777
16-May-11	0	0	1	0	0	4	42	61	74	63	61	53	42	37	57	49	49	60	70	60	34	25	21	3	866
17-May-11	3	2	1	2	2	3	39	66	72	61	62	54	42	28	47	46	52	57	64	52	29	25	20	4	833
18-May-11	2	1	1	3	1	2	35	68	76	57	56	51	46	32	48	55	52	59	65	58	30	25	26	4	853
19-May-11	2	0	1	3	0	5	41	62	71	57	63	52	50	35	56	54	51	70	60	65	35	31	23	5	892
20-May-11	1	0	1	2	1	0	31	50	66	72	69	54	45	40	57	58	51	68	66	64	38	30	17	1	882
21-May-11	1	1	1	0	0	3	30	54	67	51	50	54	47	34	39	43	36	36	40	36	19	18	6	1	667
22-May-11	0	1	1	2	0	3	29	36	47	40	48	47	42	32	56	60	52	61	71	56	29	30	20	0	763
23-May-11	0	0	1	1	0	5	46	69	72	60	61	49	46	42	49	52	43	66	67	56	31	26	24	6	872
24-May-11	1	1	1	2	2	3	44	65	68	58	56	53	46	42	50	52	46	57	60	51	32	26	26	5	847
25-May-11	2	2	2	2	1	0	41	60	63	66	57	55	47	33	51	52	51	55	60	62	33	26	29	3	853
26-May-11	3	2	2	3	3	4	41	62	69	65	61	59	45	44	47	58	53	65	69	57	32	31	22	3	900
27-May-11	1	3	3	3	2	4	41	69	74	65	59	45	49	41	52	58	54	68	68	58	41	37	18	0	913
28-May-11	1	0	0	0	0	3	34	48	70	51	56	51	42	35	45	42	37	40	44	34	20	18	8	0	679
29-May-11	0	0	0	0	1	3	25	37	44	49	41	49	43	32	57	51	53	67	64	62	30	30	20	0	758
30-May-11	1	0	1	1	0	0	46	53	58	65	60	61	57	31	48	27	60	56	59	61	37	28	27	5	842
31-May-11	2	0	1	3	1	3	42	56	63	65	56	58	49	35	43	52	48	55	62	53	32	20	24	6	829
Total	37	23	30	54	28	89	1168	1784	2045	1796	1776	1671	1401	1072	1549	1591	1561	1827	1891	1719	1012	827	638	90	25679
Avg.	1.19	0.74	0.97	1.74	0.90	2.87	37.68	57.55	65.97	57.94	57.29	53.90	45.19	34.58	49.97	51.32	50.35	58.94	61.00	55.45	32.65	26.68	20.58	2.90	828.35

(1) The data in the table above includes all movements at Sydney Airport (excluding helicopters) which may include operations that are exempt for other reports provided by Airservices under specific legislation.

Hourly Runway Movement Summary – Arrivals ¹

Date	0:00	1:00	2:00	3:00	4:00	5:00	6:00	7:00	8:00	9:00	10:00	11:00	12:00	13:00	14:00	15:00	16:00	17:00	18:00	19:00	20:00	21:00	22:00	23:00	Total
01-May-11	0	1	0	0	1	2	18	23	20	19	20	19	21	13	30	21	33	35	29	30	22	14	8	1	380
02-May-11	0	0	0	0	0	3	24	35	39	24	31	27	22	17	28	18	28	33	28	29	20	18	8	1	433
03-May-11	0	2	1	1	1	3	21	39	34	31	28	27	24	12	26	16	27	29	26	28	24	18	9	1	428
04-May-11	0	1	0	2	0	2	19	39	37	22	31	25	20	15	29	23	29	34	25	32	19	15	13	1	433
05-May-11	0	1	0	3	0	4	20	34	41	25	32	25	20	15	36	25	29	36	31	26	21	20	12	1	457
06-May-11	0	0	1	2	0	3	24	37	38	26	31	25	17	20	25	24	26	35	28	33	17	17	12	1	442
07-May-11	0	0	1	0	0	3	21	29	33	24	23	26	20	14	21	24	19	21	20	21	13	9	3	0	345
08-May-11	0	0	1	0	0	3	18	21	22	21	16	18	17	15	21	22	27	40	29	31	15	13	15	0	365
09-May-11	1	0	0	1	0	3	25	34	39	24	31	29	22	13	29	20	27	32	31	28	20	15	10	2	436
10-May-11	1	0	1	1	1	1	23	39	38	25	32	26	21	18	24	17	33	34	26	26	20	13	11	4	435
11-May-11	0	0	0	2	0	2	19	38	39	23	30	24	21	13	24	23	29	31	33	25	14	17	12	1	420
12-May-11	0	0	0	3	0	3	23	34	37	22	36	25	22	17	25	26	31	37	30	30	18	21	15	1	456
13-May-11	1	1	1	1	0	3	23	38	34	24	29	29	17	20	26	26	31	36	33	28	25	16	9	1	452
14-May-11	1	0	1	2	0	2	21	34	31	17	29	23	19	10	26	26	20	22	17	19	13	9	4	2	348
15-May-11	0	0	0	1	0	3	18	20	20	21	22	23	19	12	24	24	26	41	32	27	19	20	10	0	382
16-May-11	0	0	1	0	0	3	23	35	39	24	28	24	22	16	32	18	27	34	35	27	19	18	8	1	434
17-May-11	2	0	1	1	0	3	23	38	33	30	30	24	18	13	27	18	28	31	29	26	16	16	10	1	418
18-May-11	1	1	0	2	0	2	18	38	39	21	24	27	20	14	25	26	29	29	31	33	17	11	14	2	424
19-May-11	0	0	1	1	0	5	22	36	31	24	33	25	22	16	33	17	28	41	27	29	19	20	13	2	445
20-May-11	0	0	1	1	0	0	15	21	42	38	31	25	20	20	27	24	28	39	31	31	19	20	9	0	442
21-May-11	1	0	0	0	0	3	21	34	30	19	23	28	21	16	22	21	22	20	18	20	10	11	3	0	343
22-May-11	0	1	1	0	0	3	20	21	20	16	21	17	15	11	32	24	28	36	35	26	15	18	11	0	371
23-May-11	0	0	1	0	0	5	24	38	35	25	29	25	20	20	24	19	23	39	33	25	20	12	14	2	433
24-May-11	0	0	1	1	1	3	24	37	32	27	30	25	23	21	24	18	24	32	29	24	20	17	13	2	428
25-May-11	1	0	1	1	0	0	21	31	33	30	24	29	20	15	26	23	27	30	31	32	17	16	14	1	423
26-May-11	1	1	0	2	2	4	21	34	36	25	30	32	19	22	25	23	31	33	33	26	18	19	13	1	451
27-May-11	0	1	3	1	0	3	23	40	40	23	27	25	20	19	30	20	31	36	34	29	21	23	8	0	457
28-May-11	1	0	0	0	0	3	23	31	33	17	26	24	20	18	24	22	20	22	19	20	11	12	2	0	348
29-May-11	0	0	0	0	0	3	15	23	19	20	19	17	18	14	29	19	29	36	35	30	16	18	9	0	369
30-May-11	0	0	1	1	0	0	26	33	36	31	23	27	19	15	27	17	23	33	28	27	23	17	13	1	421
31-May-11	0	0	0	2	0	3	23	32	37	32	26	24	22	19	21	21	25	32	27	25	20	11	12	3	417
Total	11	10	19	32	6	83	659	1016	1037	750	845	769	621	493	822	665	838	1019	893	843	561	494	317	33	12836
Avg.	0.35	0.32	0.61	1.03	0.19	2.68	21.26	32.77	33.45	24.19	27.26	24.81	20.03	15.90	26.52	21.45	27.03	32.87	28.81	27.19	18.10	15.94	10.23	1.06	414.06

(1) The data in the table above includes all movements at Sydney Airport (excluding helicopters) which may include operations that are exempt for other reports provided by Airservices under specific legislation.

Hourly Runway Movement Summary – Departures ¹

Date	0:00	1:00	2:00	3:00	4:00	5:00	6:00	7:00	8:00	9:00	10:00	11:00	12:00	13:00	14:00	15:00	16:00	17:00	18:00	19:00	20:00	21:00	22:00	23:00	Total
01-May-11	0	0	1	0	0	0	10	17	26	28	27	28	25	14	25	28	28	28	35	28	19	13	9	0	389
02-May-11	0	0	0	0	1	0	19	29	35	33	34	31	29	18	24	33	21	27	33	29	11	12	15	3	437
03-May-11	2	0	1	1	1	0	21	30	32	35	28	32	22	15	25	34	20	26	31	27	15	11	13	3	425
04-May-11	1	0	0	0	2	0	21	29	38	32	25	34	21	18	23	33	24	29	37	22	18	12	12	2	433
05-May-11	1	0	1	0	2	1	21	30	28	41	27	31	25	25	22	35	26	31	40	31	18	9	11	3	459
06-May-11	2	0	0	1	1	1	20	29	30	41	29	31	23	21	24	27	29	31	35	26	17	12	9	2	441
07-May-11	1	0	0	0	0	0	11	18	36	28	37	25	22	17	19	19	22	16	21	17	9	7	7	0	332
08-May-11	0	0	0	0	0	0	9	13	28	24	31	29	25	21	24	28	26	20	30	33	22	13	9	0	385
09-May-11	0	1	0	0	0	0	19	32	35	34	34	31	22	19	25	30	24	31	27	29	15	12	12	3	435
10-May-11	1	2	1	1	1	1	21	28	37	36	21	36	22	16	25	30	26	27	39	22	10	12	10	3	428
11-May-11	1	0	0	1	1	1	20	28	37	32	32	30	21	16	25	32	22	24	35	32	10	14	11	3	428
12-May-11	2	0	0	1	1	0	16	29	36	35	29	29	26	21	23	33	24	28	35	36	19	8	14	3	448
13-May-11	1	0	1	2	0	0	18	31	29	39	29	28	27	18	29	31	27	31	27	37	21	12	10	1	449
14-May-11	1	1	0	0	1	0	10	17	33	40	27	29	27	15	16	22	16	14	26	16	11	7	5	0	334
15-May-11	0	0	0	1	0	0	8	14	29	25	29	31	24	21	24	32	23	28	33	36	15	12	9	1	395
16-May-11	0	0	0	0	0	1	19	26	35	39	33	29	20	21	25	31	22	26	35	33	15	7	13	2	432
17-May-11	1	2	0	1	2	0	16	28	39	31	32	30	24	15	20	28	24	26	35	26	13	9	10	3	415
18-May-11	1	0	1	1	1	0	17	30	37	36	32	24	26	18	23	29	23	30	34	25	13	14	12	2	429
19-May-11	2	0	0	2	0	0	19	26	40	33	30	27	28	19	23	37	23	29	33	36	16	11	10	3	447
20-May-11	1	0	0	1	1	0	16	29	24	34	38	29	25	20	30	34	23	29	35	33	19	10	8	1	440
21-May-11	0	1	1	0	0	0	9	20	37	32	27	26	26	18	17	22	14	16	22	16	9	7	3	1	324
22-May-11	0	0	0	2	0	0	9	15	27	24	27	30	27	21	24	36	24	25	36	30	14	12	9	0	392
23-May-11	0	0	0	1	0	0	22	31	37	35	32	24	26	22	25	33	20	27	34	31	11	14	10	4	439
24-May-11	1	1	0	1	1	0	20	28	36	31	26	28	23	21	26	34	22	25	31	27	12	9	13	3	419
25-May-11	1	2	1	1	1	0	20	29	30	36	33	26	27	18	25	29	24	25	29	30	16	10	15	2	430
26-May-11	2	1	2	1	1	0	20	28	33	40	31	27	26	22	22	35	22	32	36	31	14	12	9	2	449
27-May-11	1	2	0	2	2	1	18	29	34	42	32	20	29	22	22	38	23	32	34	29	20	14	10	0	456
28-May-11	0	0	0	0	0	0	11	17	37	34	30	27	22	17	21	20	17	18	25	14	9	6	6	0	331
29-May-11	0	0	0	0	1	0	10	14	25	29	22	32	25	18	28	32	24	31	29	32	14	12	11	0	389
30-May-11	1	0	0	0	0	0	20	20	22	34	37	34	38	16	21	10	37	23	31	34	14	11	14	4	421
31-May-11	2	0	1	1	1	0	19	24	26	33	30	34	27	16	22	31	23	23	35	28	12	9	12	3	412
Total	26	13	11	22	22	6	509	768	1008	1046	931	902	780	579	727	926	723	808	998	876	451	333	321	57	12843
Avg.	0.84	0.42	0.35	0.71	0.71	0.19	16.42	24.77	32.52	33.74	30.03	29.10	25.16	18.68	23.45	29.87	23.32	26.06	32.19	28.26	14.55	10.74	10.35	1.84	414.29

(1) The data in the table above includes all movements at Sydney Airport (excluding helicopters) which may include operations that are exempt for other reports provided by Airservices under specific legislation.

Mode Utilisation Summary (Total Hours by Day) ¹

Date	Curfew	16/34	Sod props	Mode 5 16/25	Mode 7 25/34	Mode 8 25/34	Mode 9 34	Mode 10 16	Mode 12 07	Mode 13 25	Mode14a 16/07	Mode 15 34R/34L	Other
01-May-11	07:00	00:36	-	04:15	-	-	-	12:07	-	-	-	-	-
02-May-11	07:00	00:18	-	02:55	01:00	-	05:29	07:15	-	-	-	-	-
03-May-11	07:00	-	-	01:19	-	-	-	15:40	-	-	-	-	-
04-May-11	07:00	00:23	-	02:24	-	-	-	14:11	-	-	-	-	-
05-May-11	07:00	00:23	00:49	02:30	-	-	-	13:15	-	-	-	-	-
06-May-11	07:00	00:18	-	05:09	-	-	-	11:31	-	-	-	-	-
07-May-11	07:00	00:25	11:52	-	-	-	04:41	-	-	-	-	-	-
08-May-11	07:00	00:31	06:19	02:24	-	-	06:20	01:23	-	-	-	-	-
09-May-11	07:00	00:24	-	00:35	-	-	-	15:59	-	-	-	-	-
10-May-11	07:00	00:27	-	06:52	-	-	-	09:38	-	-	-	-	-
11-May-11	07:00	00:21	-	-	06:09	-	10:28	-	-	-	-	-	-
12-May-11	07:00	00:14	08:01	-	-	-	08:43	-	-	-	-	-	-
13-May-11	07:00	00:30	-	-	06:37	-	09:51	-	-	-	-	-	-
14-May-11	07:00	00:25	-	10:40	-	-	-	05:53	-	-	-	-	-
15-May-11	07:00	00:24	08:50	-	01:34	-	06:10	-	-	-	-	-	-
16-May-11	07:00	00:28	03:59	-	02:33	-	09:58	-	-	-	-	-	-
17-May-11	07:00	00:15	-	04:36	01:01	-	04:17	06:47	-	-	-	-	-
18-May-11	07:00	00:28	02:37	-	03:23	-	05:09	05:19	-	-	-	-	-
19-May-11	07:00	00:12	03:27	-	-	-	13:19	-	-	-	-	-	-
20-May-11	07:00	00:20	02:37	-	-	-	14:01	-	-	-	-	-	-
21-May-11	07:00	00:53	05:35	-	00:49	-	07:03	02:37	-	-	-	-	-
22-May-11	07:00	00:30	00:31	-	00:48	-	15:09	-	-	-	-	-	-
23-May-11	07:00	00:16	-	-	02:35	-	14:07	-	-	-	-	-	-
24-May-11	07:00	-	-	04:46	-	-	05:21	06:51	-	-	-	-	-
25-May-11	07:00	00:17	-	02:16	-	-	-	14:25	-	-	-	-	-
26-May-11	07:00	00:17	-	05:26	-	-	-	11:15	-	-	-	-	-
27-May-11	07:00	00:20	00:58	04:37	-	-	04:00	07:03	-	-	-	-	-
28-May-11	07:00	00:49	-	10:26	00:45	-	02:58	01:59	-	-	-	-	-
29-May-11	07:00	00:16	-	01:28	01:54	-	01:56	11:24	-	-	-	-	-
30-May-11	07:00	-	-	00:36	-	-	-	16:23	-	-	-	-	-
31-May-11	07:00	00:31	-	-	-	-	-	13:31	-	-	02:56	-	-
Total	217:00	11:58	55:39	73:24	29:14	00:00	149:07	204:36	00:00	00:00	2:56	00:00	00:00
% Used		2.27%	10.56%	13.93%	5.55%	0.00%	28.30%	38.83%	0.00%	0.00%	0.56%	0.00%	0.00%

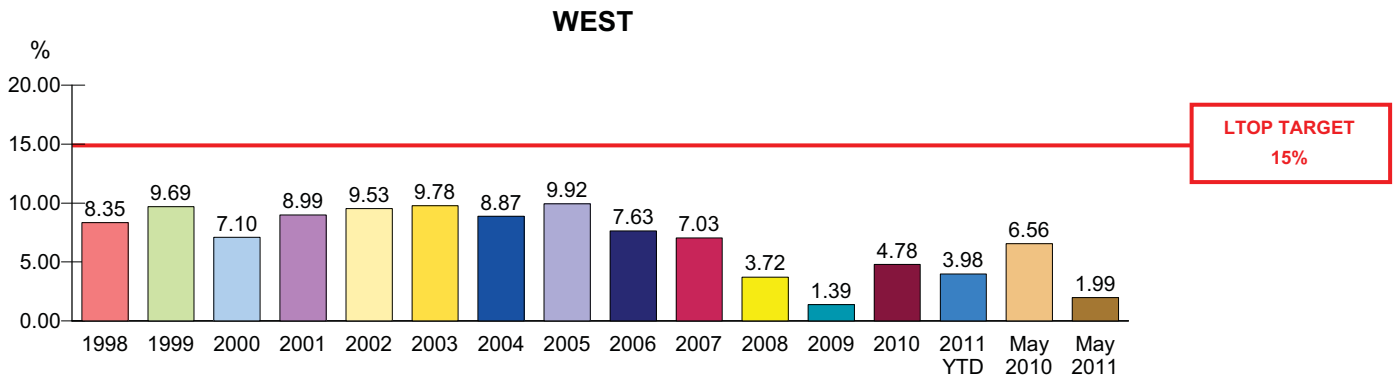
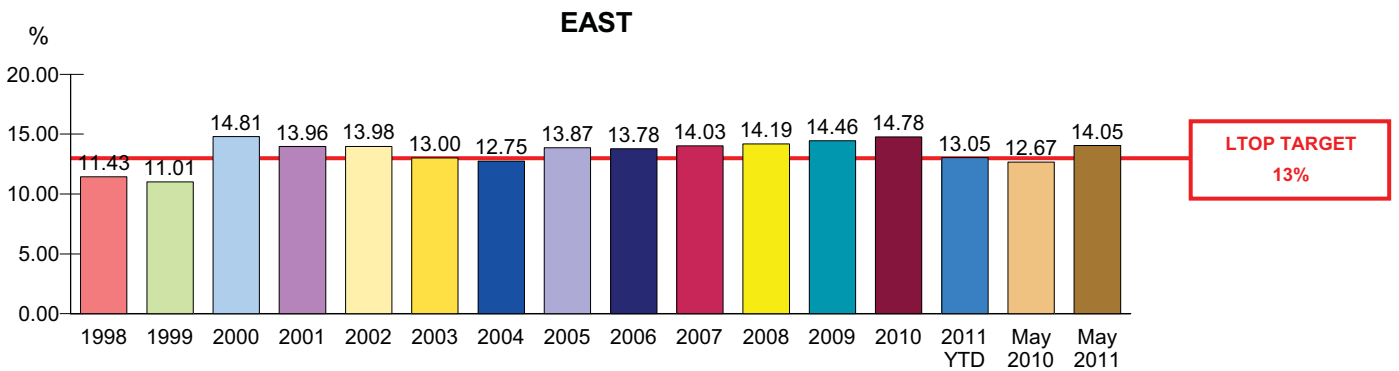
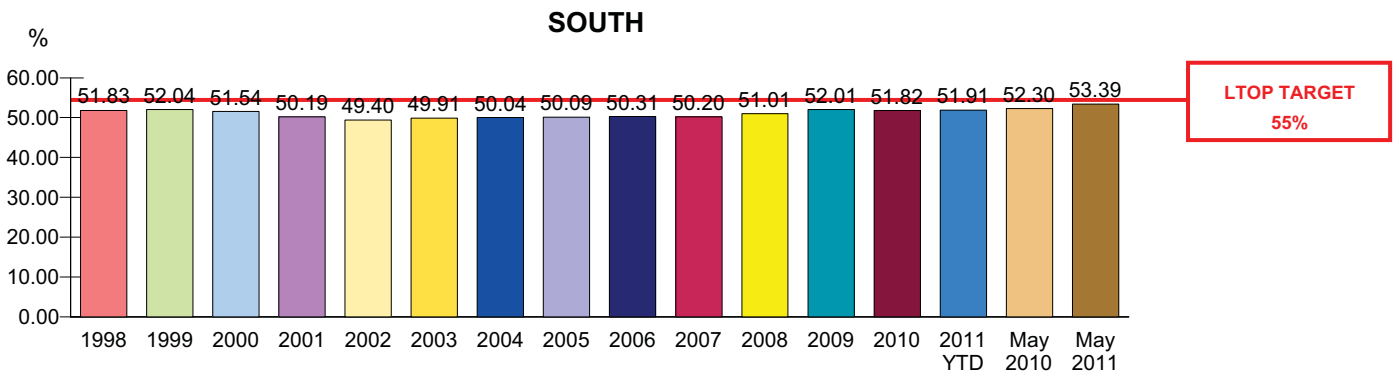
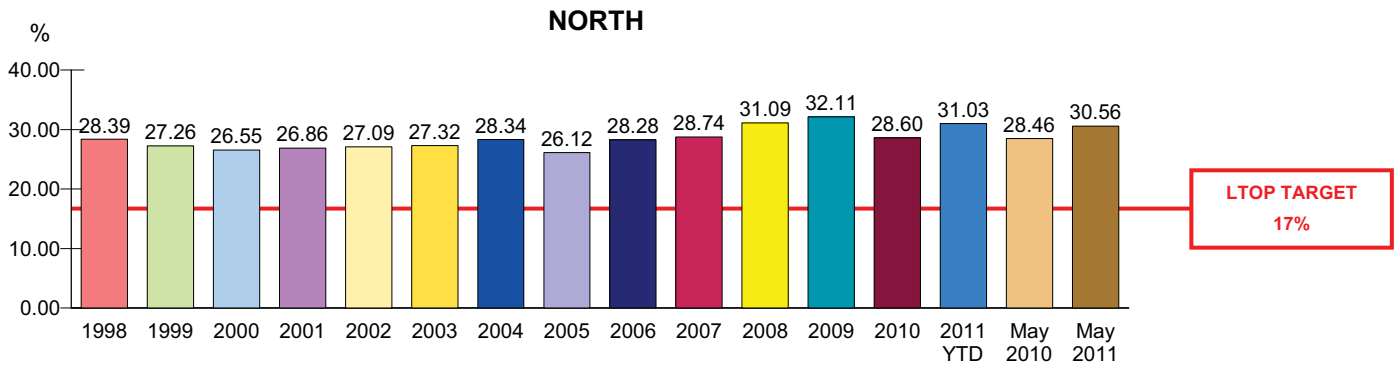
(1) Mode 15 was introduced during RESA works (commenced October 2008) and ceased being used at the completion of RESA (April 2010).

Cumulative Mode Utilisation from 1 January 2011

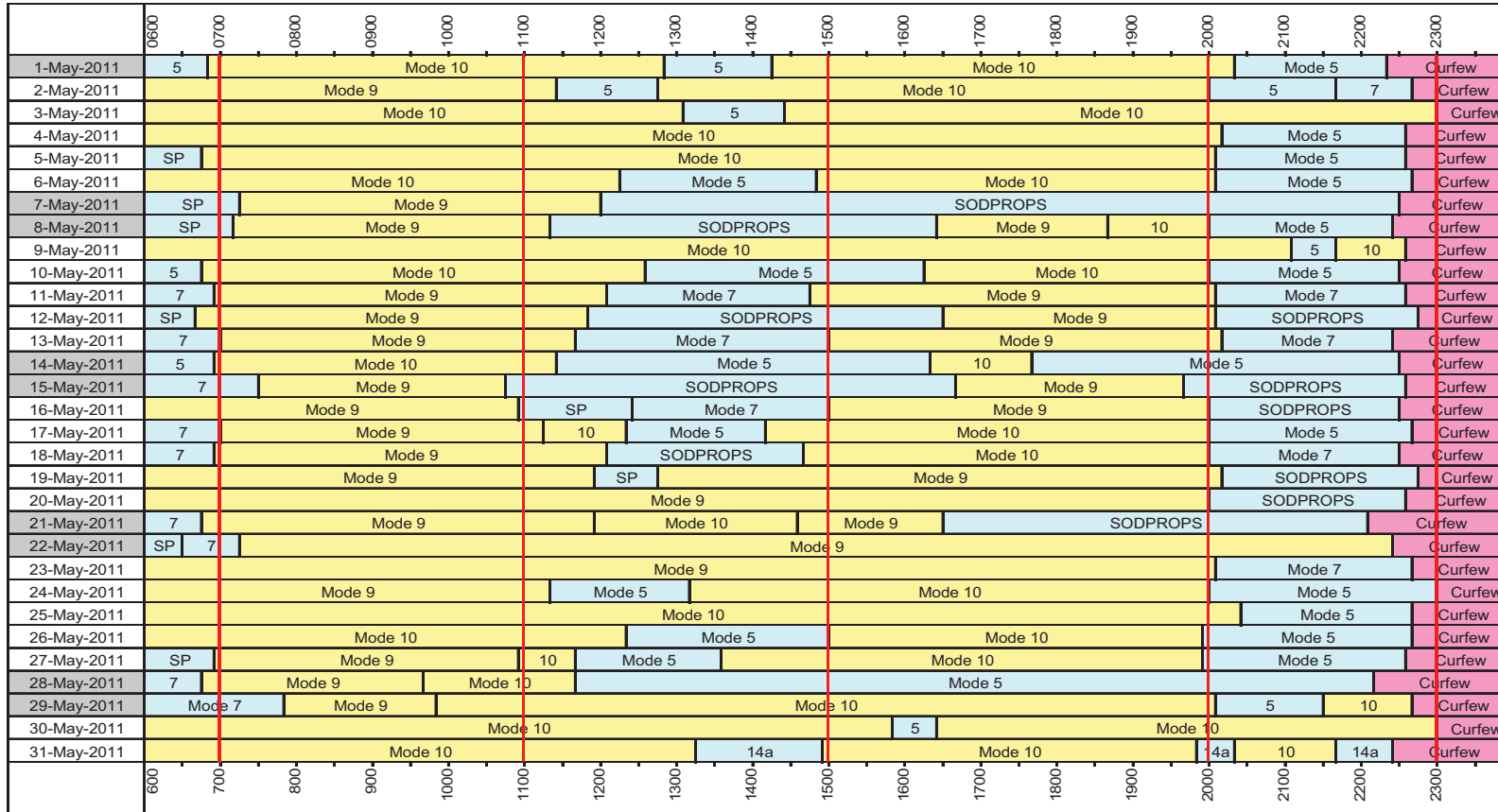
Time	2.17%	5.03%	7.13%	3.53%	0.00%	35.71%	39.53%	0.03%	0.01%	7.05%	0.00%	0.00%
Movements	0.36%	3.99%	5.27%	2.56%	0.00%	38.79%	43.22%	0.02%	0.01%	5.78%	0.00%	0.00%

Runway End Impact to 31 May 2011

Includes comparisons with annual figures for 1998 to 2010, 2011 Year to Date, current month this year and corresponding month last year.



Sydney Airport - Daily Mode Usage



Weekend

Curfew Mode CURFEW: Dep 16R Arr 34L

Parallel Modes M9: Dep 34L+R Arr 34L+R M10: Dep 16L+R Arr 16L+R

Crossing Modes SODPROPS (or SP): Dep 16L Arr 34L M5: Dep 16L+R Arr 25 M7: Dep 25 Arr 34L+R M8: Dep 25 34R Arr 34L+R M12: Dep 07 Arr 07 M13: Dep 25 Arr 25

M14A: Dep 16L+R Arr 07

Precision Runway Monitor (PRM) Operations

In June 2002 at Sydney Airport, Airservices Australia commenced operation of the Precision Runway Monitor (PRM), a highly accurate radar system, to monitor landing operations arriving from the North. PRM landings from the South have been operating since 1999. The PRM supplements the existing Instrument Landing System (ILS), and is only used by Air Traffic Control during poor weather conditions thereby reducing air traffic delays due to weather.

The PRM operation involves two changes in procedure for arrivals from the North (Runway 16)

- Aircraft make their final turn to line up with the runways about 5-10km further north of the airport than during ILS operation.
- Within this extended area aircraft may fly at a fixed altitude of 3000ft (under ILS operation 3000-4000ft).

Airservices Australia conducted a 6 month Noise Monitoring Program from June 2002 until December 2002, which included regular reporting to Environment Australia (the Commonwealth Environmental Department at that time) and the community, to meet the requirements of the then Minister for the Environment and Heritage.

Portable Noise Monitors, which were installed in suburbs affected by PRM changes, have since been removed with the cessation of the Noise Monitoring Program.

Nevertheless Airservices Australia Noise Enquiry Service continues to collect daily statistical data relating to PRM operations on Runway 16 and associated issues. Below is a summary of data collected for **May 2011**.

Days on which Runway 16 PRM was used and hours of usage (ATIS time)

Date	PRM		Hours of PRM operation
	Start Time	End Time	
09 May 2011	7:15	8:20	1:05
25 May 2011	6:55	9:27	2:32
26 May 2011	7:02	8:47	1:45
30 May 2011	7:07	8:39	1:32
31 May 2011	6:55	9:11	2:16

Number of Runway 16 arrivals during PRM operations and their runway assignment

Date	Number of arrivals on Runway 16 during PRM	Runway assignment	
		16L	16R
09 May 2011	43	21	22
25 May 2011	82	37	45
26 May 2011	61	27	34
30 May 2011	54	26	28
31 May 2011	77	36	41

Complaints and complainants by suburb, specifically mentioning PRM operations

Suburb	Number of complaints	Number of complainants
-	-	-

Noise Enquiry Service

The Noise Enquiry Service is a function of Airservices Australia located at Sydney Airport. For more information visit the website at:

www.airservicesaustralia.com

The practices of the Service comply with the requirements of:

The Privacy Act 1988 (Commonwealth)

www.privacy.gov.au

The Telecommunications Act 1997 (Commonwealth)

www.acma.gov.au

The responsibilities of the Service include the recording of complaints, comments and enquiries regarding aircraft operations and noise for flights within Australia.

The Service is available **from 9 am to 5 pm, Monday to Friday** Australian Eastern Standard Time / Eastern Daylight Saving Time. Outside of these hours Voice Mail is used to record these calls. The Service can be contacted by:

telephone	1-800-802-584
facsimile	(02) 9556-6641
e-mail	neu@airservicesaustralia.com

In addition complaints can be lodged via the internet at:

www.airservicesaustralia.com/ncm

Complaints received are entered directly into a computer database. Any personal information collected is protected and will not be passed onto any unrelated parties. Statistical information generated from the computer database is produced for this Report, and is also made available to the Sydney Airport Community Forum (SACF). For more information visit the website at:

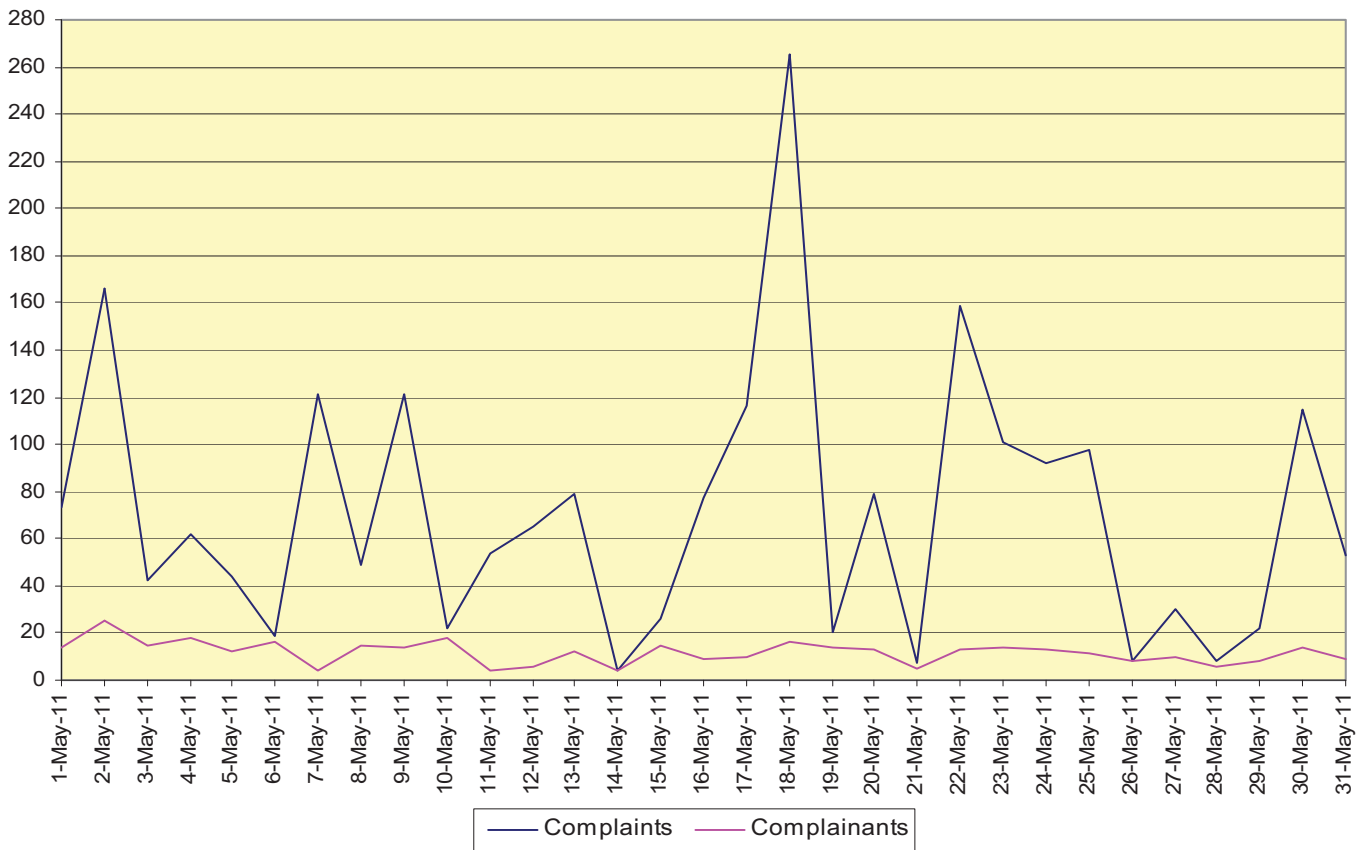
www.sacf.infrastructure.gov.au

Summary of Section Activity – May 2011

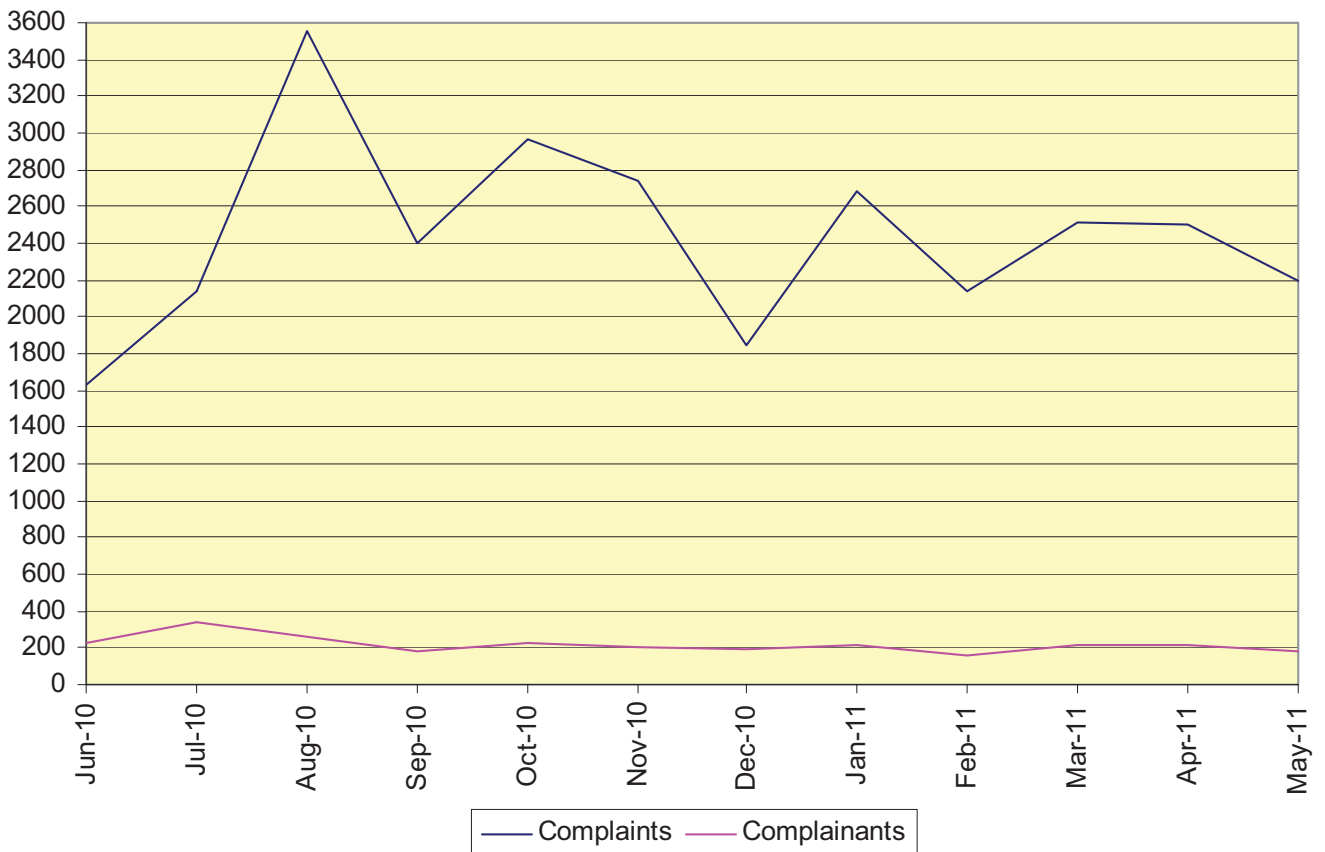
➤ Sydney Suburbs Complaints	
• By phone	229
• By correspondence	20
• By internet	507
• By e-mail	9
• By WebTrak	1432
➤ Sydney Suburbs Complaints – suburb not specified	8
➤ Sydney Suburbs Comments and Enquiries	36
➤ Other than Sydney Suburbs or Sydney Airport (NSW Only) Complaints	334
➤ Other than Sydney Suburbs or Sydney Airport (NSW Only) Comments and Enquiries	2
➤ Callback / Information Requests (NSW Only)	346

Complaints Graphs

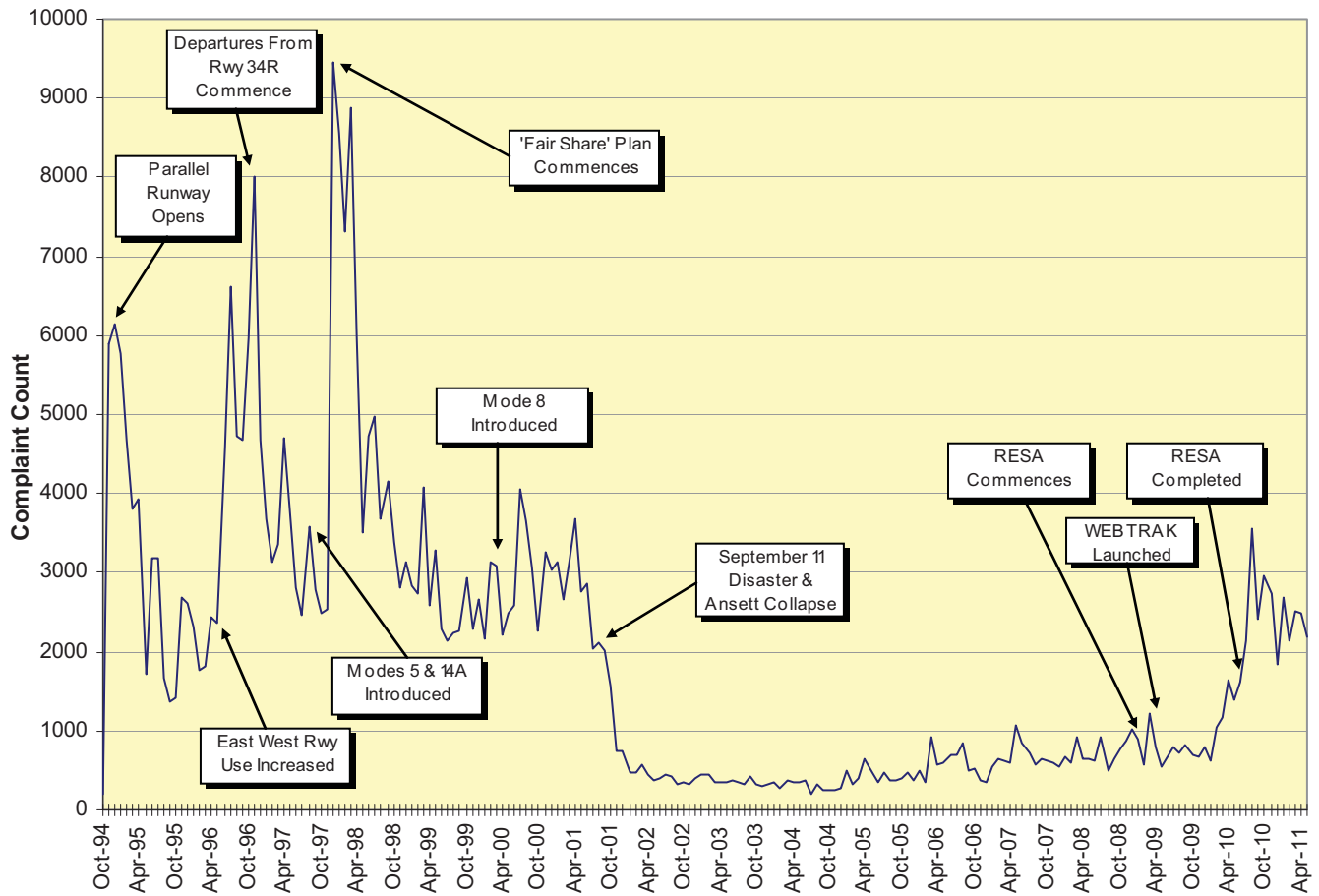
Complaints vs Complainants – 1 May to 31 May 2011



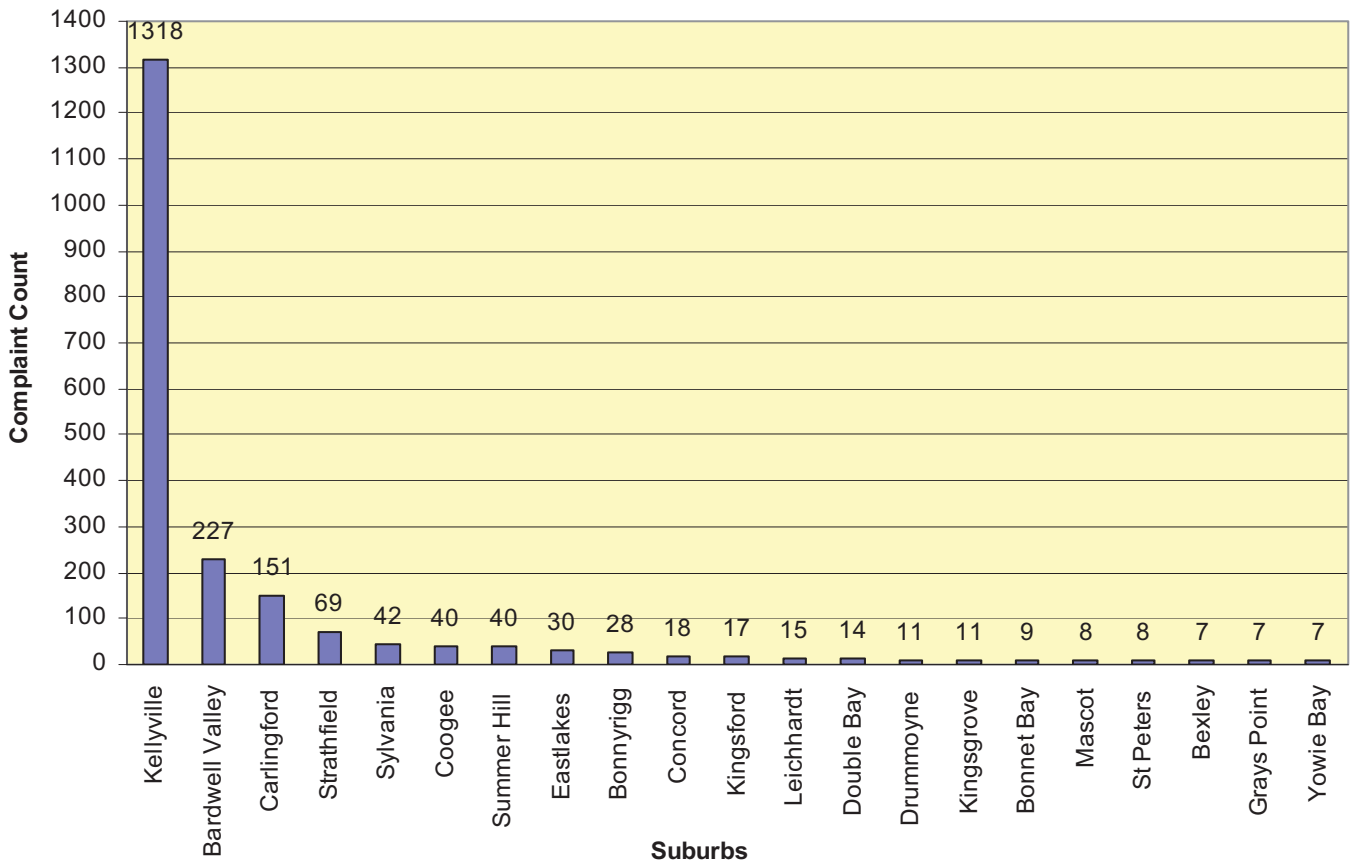
Complaints vs Complainants – Monthly



Complaints History

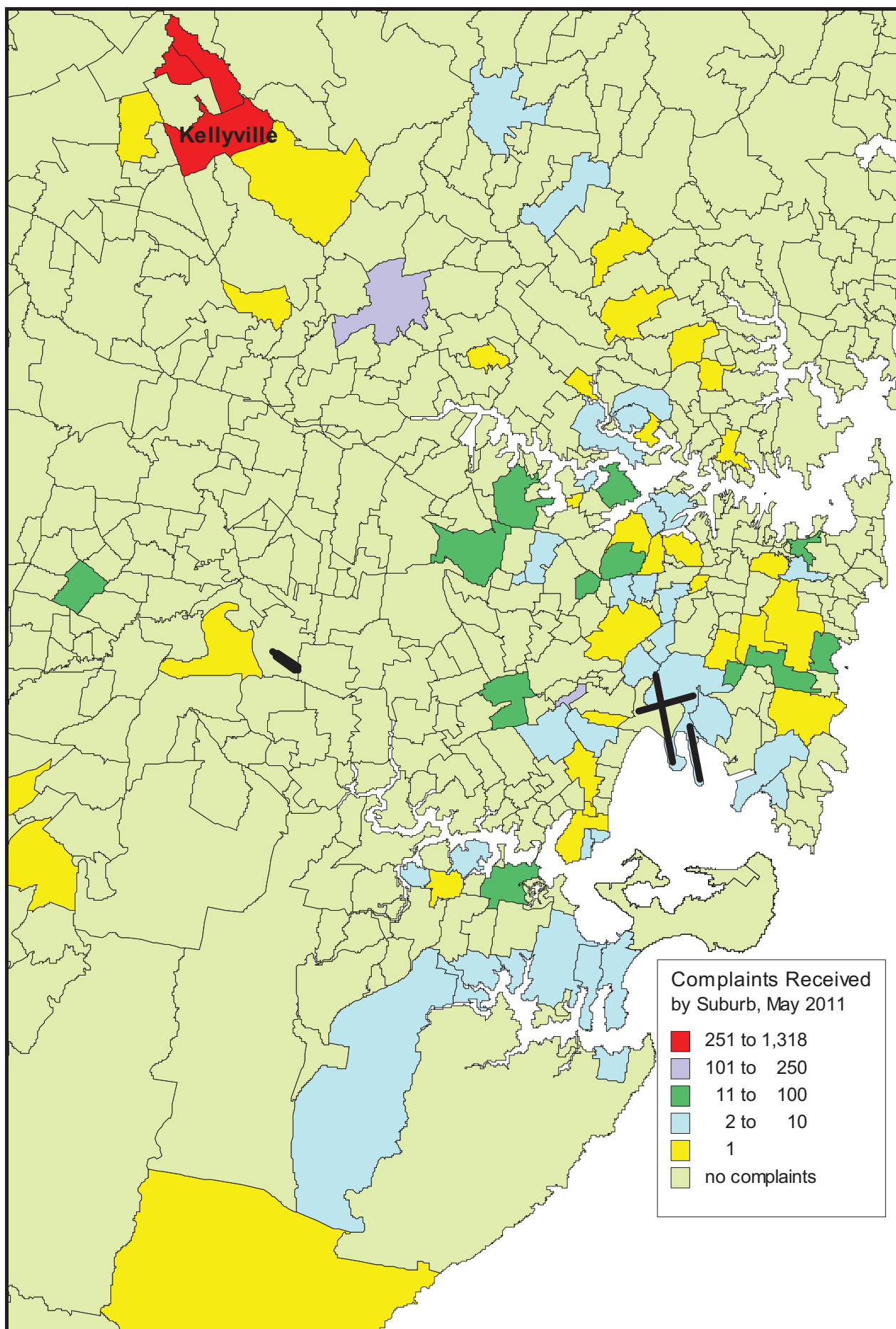


Top 20 Complaint Suburbs – 1 May to 31 May 2011



Complaint Density by Suburb

1 May to 31 May 2011



Recorded Complaints vs Complainants, by Suburb

1 May to 31 May 2011

<i>SUBURB</i>	<i>COMPLAINTS</i>	<i>COMPLAINANTS</i>	<i>SUBURB</i>	<i>COMPLAINTS</i>	<i>COMPLAINANTS</i>
Not Specified	8	5	Kingsford	17	6
Annandale	1	1	Kingsgrove	11	1
Balmain	2	2	Kogarah	1	1
Banksia	1	1	Lane Cove	2	2
Bardwell Valley	227	1	Leichhardt	15	9
Bexley	7	5	Lilyfield	1	1
Bonnet Bay	9	2	Lindfield	1	1
Bonnyrigg	28	2	Longueville	1	1
Botany	3	3	Maroubra	1	1
Bundeena	2	1	Marrickville	1	1
Burwood Heights	5	1	Mascot	8	4
Caringbah	2	2	Matraville	2	2
Carlingford	151	4	Newtown	3	3
Castle Hill	1	1	North Sydney	1	1
Chatswood	1	1	Oyster Bay	4	1
Chipping Norton	1	1	Paddington	1	1
Chiswick	2	2	Petersham	4	2
Concord	18	3	Phillip Bay	2	1
Coogee	40	13	Ramsgate	1	1
Cronulla	3	3	Randwick	1	1
Croydon	3	2	Riverview	4	1
Darlington	1	1	Rockdale	2	2
Denistone	1	1	Rosebery	1	1
Dolls Point	3	3	Rozelle	3	2
Double Bay	14	8	Sandringham	2	2
Drummoyne	11	6	Sans Souci	1	1
East Ryde	1	1	St Peters	8	3
Eastlakes	30	3	Stanmore	6	2
Glebe	1	1	Strathfield	69	2
Gordon	1	1	Summer Hill	40	2
Grays Point	7	2	Sydney South	1	1
Gymea Bay	2	2	Sylvania	42	3
Helensburgh	1	1	Tempe	3	2
Hornsby	3	3	Turrumurra	6	5
Hunters Hill	3	3	Wareemba	1	1
Ingleburn	1	1	Willoughby	1	1
Jannali	1	1	Winston Hills	1	1
Kellyville	1318	1	Woollahra	3	2
Kellyville Ridge	1	1	Woolooware	2	1
Kensington	1	1	Yowie Bay	7	4
Total Complaints	2197		Total Complainants		177

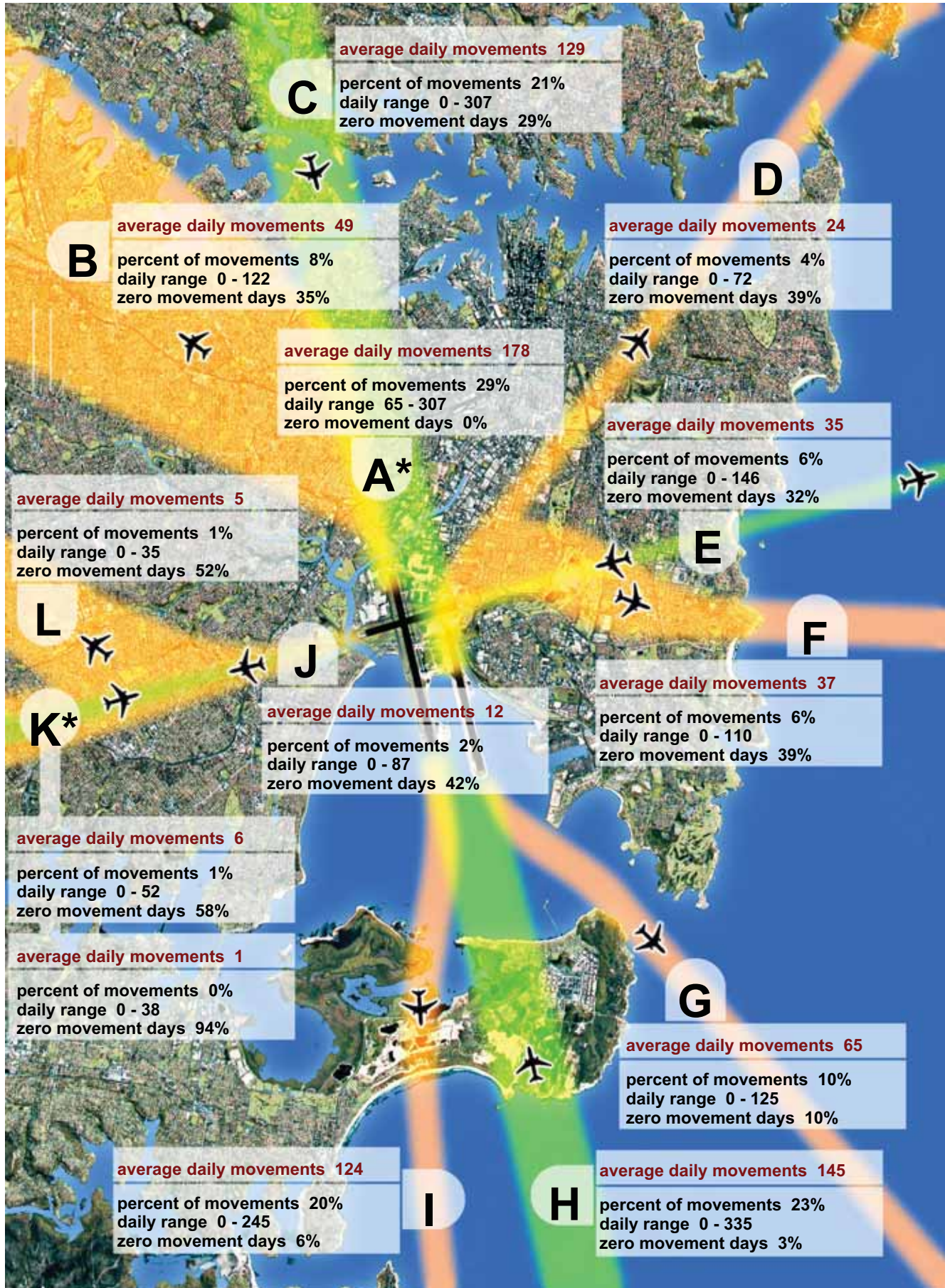
Recorded Complaints vs Complainants, by Locations/Airports Other than Sydney (NSW Only)

1 May to 31 May 2011

<i>SUBURB</i>	<i>COMPLAINTS</i>	<i>COMPLAINANTS</i>	<i>SUBURB</i>	<i>COMPLAINTS</i>	<i>COMPLAINANTS</i>
Albion Park	1	1	Lindfield	1	1
Albury	1	1	Mandemar	1	1
Amberley	1	1	Mount Hunter	1	1
Bankstown	286	10	Not Specified	1	1
Bathurst	1	1	Nowra	1	1
Berowra Heights	1	1	Nowra Hospital	1	1
Bungarby	1	1	Orange	1	1
Camden	21	11	Rutherford	1	1
Castle Hill	2	1	Singleton	1	1
Cooks Hill	1	1	Sylvania	1	1
Coxs Crown	1	1	Tangalooma	1	1
Georgica	1	1	Vacy	1	1
Kellyville	1	1	Williamtown	2	2
Kirribilli	1	1			
<u>Total Complaints</u>		334	<u>Total Complainants</u>		47

Sydney Airport : Jet Flight Path Movements

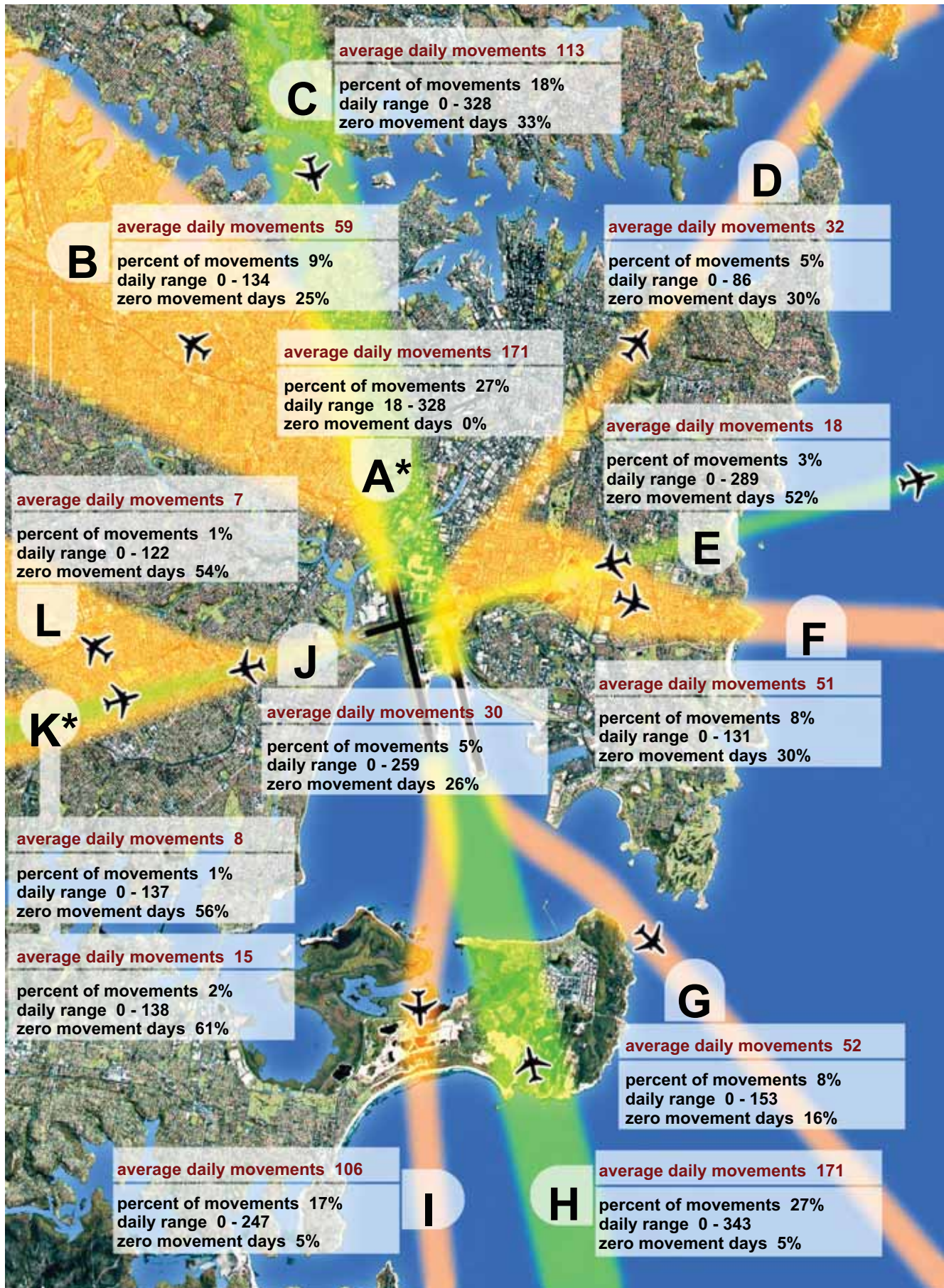
1 May 2011 to 31 May 2011, All Jets



Note : Track A* is Tracks B and C combined. Track K* shows departures (top box) and arrivals (bottom box).

Sydney Airport : Jet Flight Path Movements

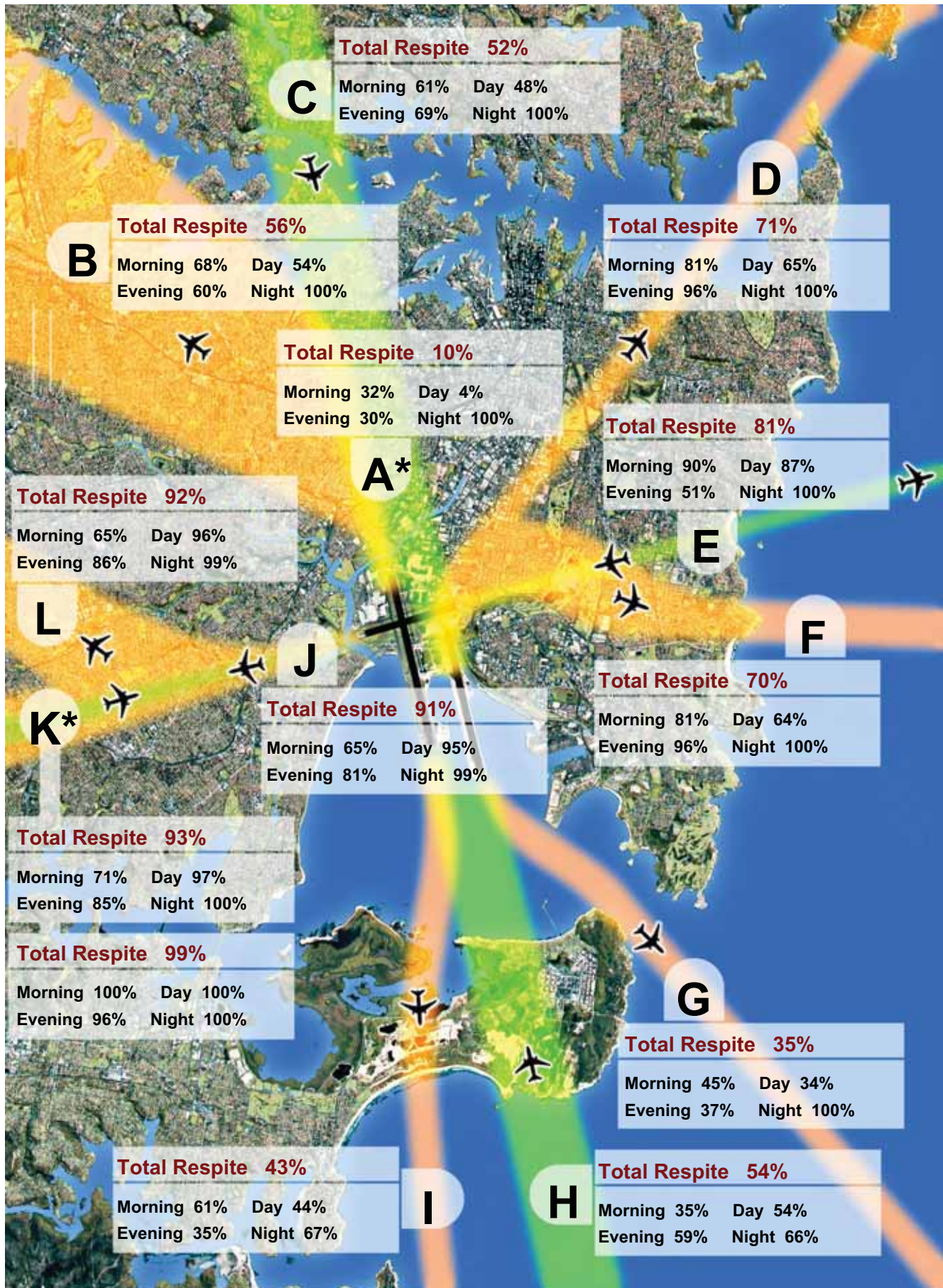
1 June 2010 to 31 May 2011, All Jets



Note : Track A* is Tracks B and C combined. Track K* shows departures (top box) and arrivals (bottom box).

Sydney Airport : Jet Aircraft Respite (R60)

1 May 2011 to 31 May 2011, All Jets



Note : Track A* is Tracks B and C combined. Track K* shows departures (top box) and arrivals (bottom box).

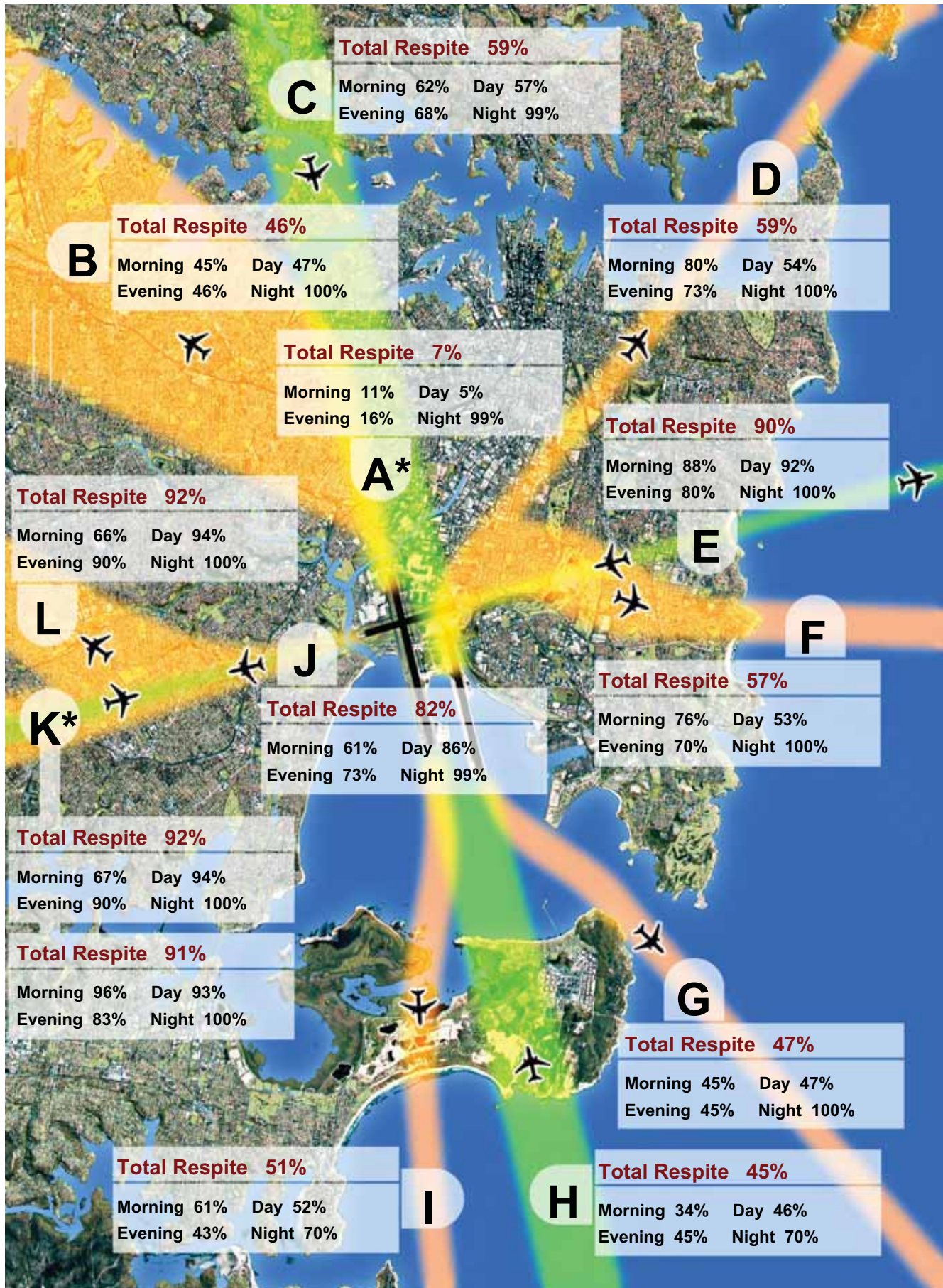
A respite interval is a 60 minute period when there are no jet movements (R60).

Morning: 06:00 to 07:00 Day: 07:00 to 20:00 Evening: 20:00 to 23:00 Night: 23:00 to 06:00

Total Respite: 06:00 to 23:00

Sydney Airport : Jet Aircraft Respite (R60)

1 June 2010 to 31 May 2011, All Jets



Note : Track A* is Tracks B and C combined. Track K* shows departures (top box) and arrivals (bottom box).

A respite interval is a 60 minute period when there are no jet movements (R60).

Morning: 06:00 to 07:00 Day: 07:00 to 20:00 Evening: 20:00 to 23:00 Night: 23:00 to 06:00

Total Respite: 06:00 to 23:00

Sydney Airport - Jet Flight Path Movements (Explanation)

June 2010 to May 2011

The flight path bands depicted in the diagram are indicative only and are used to illustrate how the noise is being shared. Some flight tracks will be outside the bands indicated.

- The diagram shows only jet flight tracks and movements. Propeller flight tracks and movements are not shown.
- Percentages and average daily movement numbers have been rounded.
- The information presented in the movements and respite summary statistics sheets is derived from Airservices Australia's NFPMS.

	Description	Notes
A	Inner north	
	Arrivals from and departures to the north (L16L, L16R, D34L)	
B	North-west	Area mainly gets overflights (departures) from Mode 9 . Due to seasonal changes in wind patterns the highest use of this Mode was in October 2010 .
	Departures off runway 34L	
C	North shore	Area mainly gets overflights (arrivals) from Mode 10 . Due to seasonal changes in wind patterns the highest use of this Mode was in April 2011 .
	Arrivals from the north on runways 16L and 16R	
D	North-east	Area gets overflights (departures) from Mode 9 . Due to seasonal changes in wind patterns the highest use of Mode 9 was in October 2010 .
	Departures off runway 34R to the north-east	
E	East - Coogee	Area mainly gets overflights (arrivals) from Mode 5 . Due to seasonal changes in wind patterns the highest use of this Mode was in May 2011 .
	Arrivals on runway 25 and departures from runway 07	
F	East - Maroubra	Area gets overflights (departures) from Mode 9 . Due to seasonal changes in wind patterns the highest use of Mode 9 was in October 2010 .
	Departures from runway 34R that turn hard east	
G	South - Botany Bay Heads	
	Departures from runway 16L	
H	South - Kurnell Peninsula	Area gets overflights (arrivals) from Modes 9 & 7 . Due to seasonal changes in wind patterns the highest use of Mode 9 was in October 2010 and Mode 7 was in August 2010 .
	Arrivals on runways 34L and 34R	
I	South - Kurnell Sand Hills	
	Departures from runway 16R	
J, K & L	West	Area mainly gets overflights from Modes 7 & 8 (departures) and Mode 14A (arrivals). Due to seasonal changes in wind patterns the highest use of Mode 7 was in August 2010 , Mode 14A in January 2011 & Mode 8 has not been used during the past 12 months.
	Arrivals on runway 07 and departures from runway 25	

Sydney Airport - Jet Aircraft Respite (R60) (Explanation)

Respite

The respite figures in the map are based on the concept of a **respite hour** being a **whole clock hour** where there are **no aircraft movements**.

Total Respite takes into account all 7 days of the week and is based on the total number of clock hours during the period 6am to 11pm, for the period June 2010 to May 2011, during which there were no movements.

Morning Respite is based on the above criteria for the period 6am to 7am for all 7 days of the week.

Day Respite is based on the above criteria for the period 7am to 8pm for all 7 days of the week.

Evening Respite is based on the above criteria for the period 8pm to 11pm for all 7 days of the week.

Curfew (Night) is based on the above criteria for the period 11pm to 6am for all 7 days of the week.

The percentage figure for a category of respite refers to the proportion of the total possible number of respite hours for that category for the date period. For example, the Jet Aircraft Respite Hours map (for the last rolling year) shows that **flight path D has Total Respite hours of 59%**. This means that over the period **June 2010 to May 2011 for 59%** of the total clock hours between 6am and 11pm there were no movements on that flight path.

Notes

- Propeller movements have not been taken into account.
- The information presented in the map is derived from the Airport Noise and Operations Management System (ANOMS) data and is subject to change.
- The flight path bands depicted in the map are indicative only and are used to illustrate the extent of respite in different areas. Some jet movements will be outside the bands indicated.

Measured Daily N70 Values

Description

Airservices Australia maintains and operates a Noise and Flight path Monitoring System (NFPMS) at all the major Australian airports. Environmental Services at Airservices Australia's head office located in Canberra regularly reports on aircraft flight paths and noise for each major Airport. The data appearing here is a summary of the N70 noise data for Sydney Airport for May 2011.



Figure 1. NMT sites about Sydney Airport and the daily N70 values for the month of May 2011

The measured daily N70 value is the average daily number of aircraft noise events whose maximum noise level (LAmax) equals or exceeds 70dBA.

The daily N70 values for the various NMTs and their positions in Sydney are displayed in Figure 1. The total number of Correlated Noise Events (CNE) and the number of days each NMT was operational during May 2011 along with the Daily N70 values for the three months up to and including May are given in Table 1.

<i>Location</i>	<i>CNE May</i>	<i>Operational Days May</i>	<i>N70 May</i>	<i>N70 Apr</i>	<i>N70 Mar</i>
<i>Threshold rwy 34</i>	9,607	30.9	307	292	301
<i>Penshurst</i>	399	30.9	7	24	35
<i>Bexley</i>	553	30.9	13	30	42
<i>Sydenham</i>	5,243	30.9	169	182	176
<i>Johnston St. Annandale</i>	3,142	30.9	74	86	68
<i>Church St. St Peters</i>	4,360	30.9	98	108	98
<i>Leichhardt PEMU 36</i>	3,459	30.9	106	127	110
<i>Eastlakes</i>	2,352	28.3	77	58	55
<i>Coogee</i>	1,494	30.9	44	28	15
<i>Kurnell</i>	2,289	30.9	58	46	69
<i>Croydon</i>	486	30.9	11	9	11
<i>Hunters Hill</i>	5,149	30.9	67	83	72

Table 1 Results for each Noise Monitoring Terminal for the three months up to and including May 2011.

The N70 values for May 2011 have also been calculated for six different periods:

- Morning N70 value (AM), correlated noise events between 6:00am and 7:00am.
- Evening N70 value (PM), between 8:00pm and 11:00pm.
- Daytime N70 value (Day), between 7:00am and 8:00pm
- Night N70 value (Night), between 11:00pm and 6:00am
- Weekend Day N70 value (WE_D), between 6:00am and 11:00pm Saturday and Sunday.
- Weekend Night N70 value (WE_N), between midnight Friday to 6:00am
- Saturday, 11:00pm Saturday to 6:00am Sunday and 11:00pm to midnight on Sunday

These results are contained in Table 2.

Runway 34L AM 17 PM 34 Day 244 Night 12 WE_D 279 WE_N 5	Penshurst AM 1 PM 3 Day 4 Night 0 WE_D 4 WE_N 0	Bexley AM 3 PM 5 Day 7 Night 0 WE_D 8 WE_N 0	Eastlakes AM 3 PM 21 Day 53 Night 0 WE_D 76 WE_N 0
Coogee AM 1 PM 20 Day 19 Night 0 WE_D 54 WE_N 0	Sydenham AM 8 PM 11 Day 165 Night 1 WE_D 130 WE_N 0	Leichhardt PEMU36 AM 7 PM 6 Day 109 Night 1 WE_D 66 WE_N 0	Kurnell AM 2 PM 3 Day 57 Night 0 WE_D 46 WE_N 0
Annandale AM 2 PM 3 Day 83 Night 0 WE_D 39 WE_N 0	St Peters AM 3 PM 6 Day 101 Night 0 WE_D 69 WE_N 0	Croydon AM 0 PM 2 Day 10 Night 0 WE_D 9 WE_N 0	Hunters Hill AM 6 PM 4 Day 66 Night 0 WE_D 42 WE_N 0

Table 2. N70 values for the different periods of the day.

Due to normal maintenance activities and occasional upgrading of the system any one NMT may not have been operational for the entire sample period. As a result the average at each NMT is performed only for the period in which the NMT was operating; this ensures the daily N70 figure is not influenced by NMT downtime.

DISCLAIMER

The Sydney Airport Operational Statistics report contains a summary of data collected over the specified period and is intended to convey the best information available at the time from the Noise and Flight Path Monitoring System (NFPMS), Noise Complaint Monitoring System (NCMS) and Transparent Noise Information Package (TNIP). These system databases and programs are to some extent dependent upon external sources and errors may occur. All care is taken in preparation of the report but its complete accuracy cannot be guaranteed. Airservices Australia does not accept any legal liability for any losses arising from reliance upon data in this report which may be found to be inaccurate.