



AIRSERVICES AUSTRALIA

Sydney Airport Operational Statistics August 2008

Produced by Environment and Climate Change

PREVIEW

Sydney Airport Operational Statistics Report Preview

August 2008

Total Runway Movements (excluding helicopter operations) (refer pages 5-10)

There was a total of **24,872** aircraft movements this month (daily average **802.32**). Last month there were a total of **25,544** movements (daily average **824.00**) and for the same month last year there were a total of **24,755** movements (daily average **798.55**).

Mode Utilisation (refer pages 11 & 13)

Individual mode use in excess of 9 hours occurred on **25** days this month, Mode **10** on **12** days, Mode **9** on **10** days, Mode **7** on **2** days and Mode **13** on **1** day. Crossing runway modes (including Sodprops) were used for **30.65%** of non Curfew hours.

Runway End Impact Long Term Operating Plan (LTOP) Targets (refer page 12)

LTOP targets - North 17% - South 55% - East 13% - West 15%

The two fundamental factors which influence the selection of a runway and therefore the LTOP targets are forecast or prevailing weather and traffic levels. This month's results are as follows:

North **27.94%** - This result is above the LTOP target but below the previous month (**28.31%**).

South **50.51%** - This result is below the LTOP target but above the previous month (**50.28%**).

East **15.85%** - This result is above the LTOP target and above the previous month (**15.37%**).

West **5.71%** - This result is below the LTOP target and below the previous month (**6.04%**).

16 Precision Runway Monitor (PRM) Operations (refer page 14)

This procedure was not utilized this month.

Noise Enquiry Service (refer pages 15-20)

A total of **582** complaints, comments and enquiries were received as follows:

497 Sydney suburbs complaints from **114** complainants

43 Sydney suburbs comments and enquiries

42 non Sydney Airport or Sydney suburbs (NSW only) complaints, comments and enquiries

Noise Enquiry Service
Environment and Climate Change
Airservices Australia

telephone 1-800-802-584

facsimile (02) 9556-6641

e-mail community.relations@airservicesaustralia.com

internet www.airservicesaustralia.com

Table of Contents

Preview.....	i
Table of Contents.....	1
Sydney Airport Runways.....	2
Runway Modes of Operation.....	3
Preferred Runway Selection.....	4
Runway Movement Summary – All Aircraft.....	5
Runway Movement Summary – Jet Aircraft only.....	6
Runway Movement Summary – Non Jet Aircraft only.....	7
Hourly Runway Movement Summary– All Movements.....	8
Hourly Runway Movement Summary – Arrivals.....	9
Hourly Runway Movement Summary – Departures.....	10
Mode Utilisation Summary / Cumulative Mode Utilisation from 1 January 2008.....	11
Runway End Impact.....	12
Daily Mode Usage.....	13
PRM Statistics.....	14
Noise Enquiry Service.....	15
Complaints Graphs – Complaints vs Complainants.....	16
Complaints History / Top Complaint Suburbs.....	17
Complaint Density by Suburb.....	18
Recorded Complaints vs Complainants, by Suburb.....	19
Recorded Complaints vs Complainants, by Locations/Airports Other Than Sydney.....	20
Jet Flight Path Movements * (1 – 31 August 2008).....	21
Jet Flight Path Movements * (1 September 2007 – 31 August 2008).....	22
Jet Aircraft Respite (R60) * (1 – 31 August 2008).....	23
Jet Aircraft Respite (R60) * (1 September 2007 – 31 August 2008).....	24
Jet Flight Path Movements (Explanation).....	25
Jet Aircraft Respite (R60) (Explanation).....	26
Measured Daily N70 Values.....	27

This report is available on the Internet at Airservices Australia website at

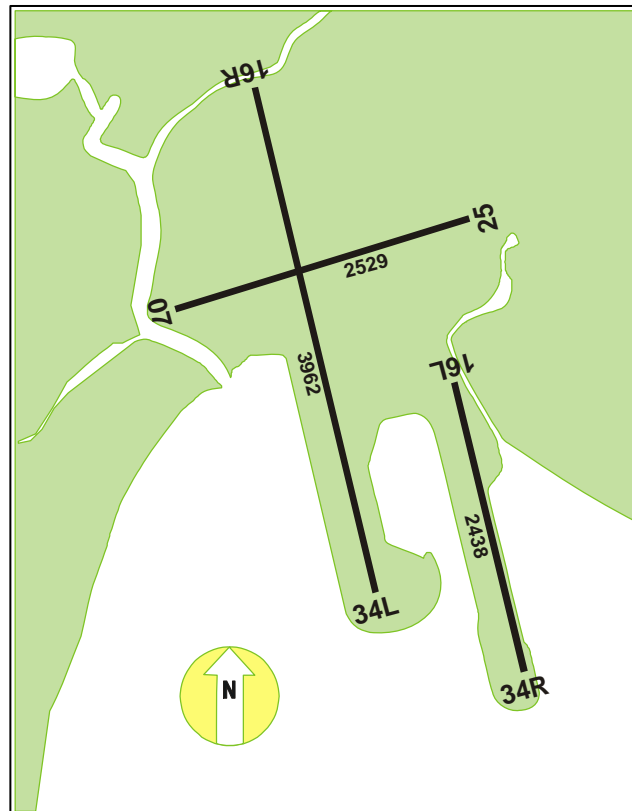
www.airservicesaustralia.com

click on "Projects & Services", "Reports & Statistics" ***then***

"Sydney Airport Operational Statistics".

* This information is produced using the TNIP software package developed by the Department of Infrastructure, Transport, Regional Development and Local Government

Sydney Airport Runways



Runway numbers refer to the direction an aircraft is flying.

Runway 16R/34L
Runway 16L/34R
Runway 07/25

Main North-South runway
Parallel North-South runway.
East-West runway.

Runways 16L and 16R

Used by aircraft landing or taking off towards the South.
(16=approx. 160 degrees magnetic bearing)

Runway 34L

Used by aircraft landing or taking off towards the North.
(34=approx. 340 degrees magnetic bearing)

Runway 34R

Used by aircraft landing toward the north and taking off to the East.

Runway 07

Used by aircraft landing or taking off towards the East.
(07=approx. 070 degrees magnetic bearing)

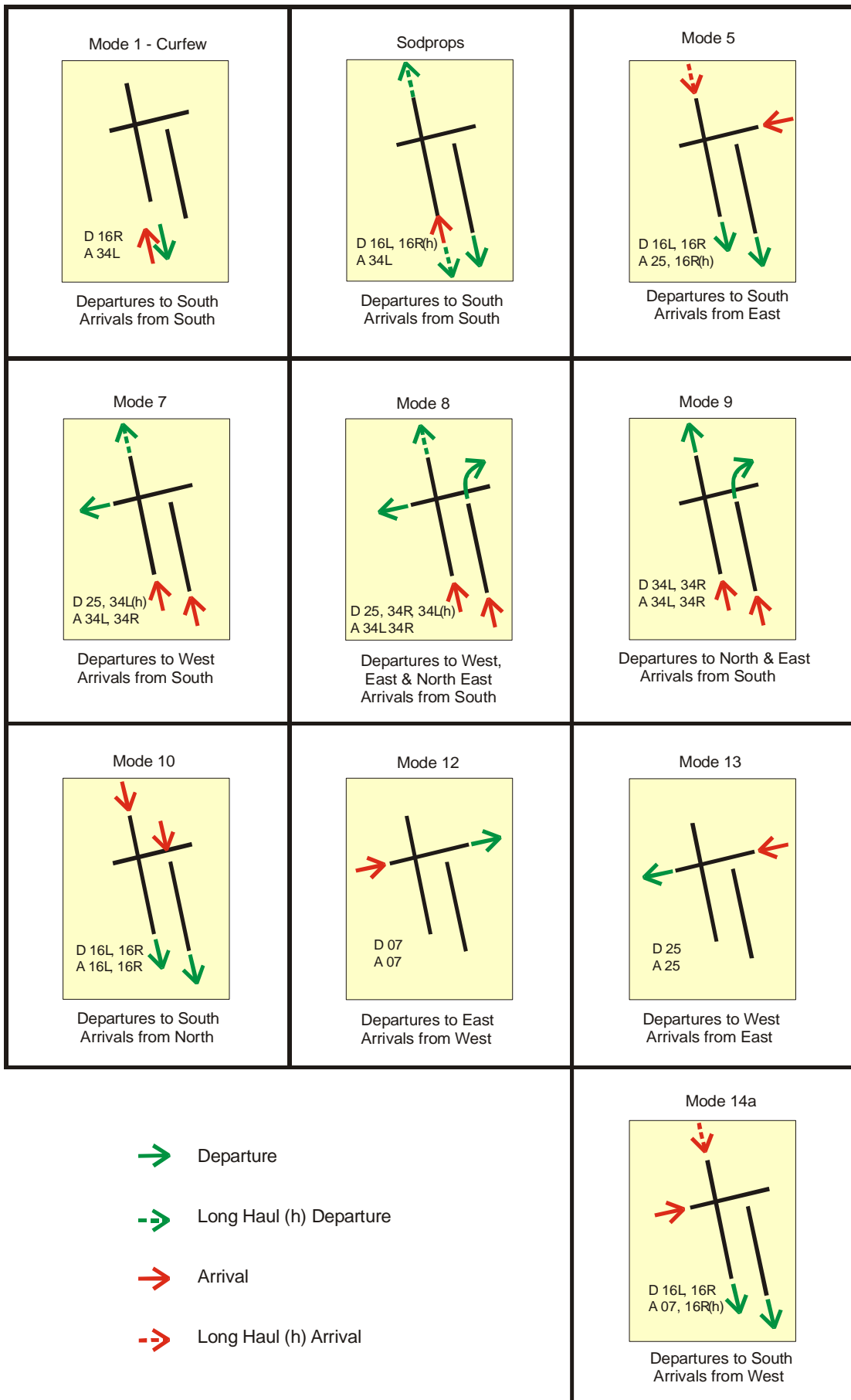
Runway 25

Used by aircraft landing or taking off towards the West.
(25=approx. 250 degrees magnetic bearing)

Movements over the North
Movements over the South
Movements over the East
Movements over the West

=16L(arr) + 16R(arr) + 34L(dep)
=16L(dep) + 16R(dep) + 34L(arr) + 34R(arr)
=07(dep) + 25(arr) + 34R(dep)
=07(arr) + 25(dep)

Runway Modes of Operation



Sydney Airport Preferred Runway Selection

Effective from 28 November 2000

Monday to Friday		
2300 to 0600	1.	Curfew – Departures 16R/Arrivals 34L (Mode 1)
0600 to 0700	1.	SODPROPS - Departures 16L / Arrivals 34L
	2.	Departures 34R, 25 & 34L / Arrivals 34L&R (Mode 8) , or Departures 25 / Arrivals 34L&R (Mode 7) , or Departures 16L&R / Arrivals 25 (Mode 5) , or Departures 16L&R / Arrivals 07 (Mode 14A)
	3.	34 (Mode 9) or 16 (Mode 10)
	4.	07 (Mode 12) or 25 (Mode 13)
0700 to 2245 / 2300	1.	SODPROPS - Departures 16L / Arrivals 34L
	2.	Departures 16L&R / Arrivals 07 (Mode 14A) , or Departures 34R, 25 & 34L / Arrivals 34L&R (Mode 8) , or Departures 25 / Arrivals 34L&R (Mode 7) , or Departures 16L&R / Arrivals 25 (Mode 5)
	3.	34 (Mode 9) or 16 (Mode 10)
	4.	07 (Mode 12) or 25 (Mode 13)
2245 to 2300	1.	SODPROPS - Departures 16L&R (Mandatory) / Arrivals 34L
	2.	Departures 16L&R (Mandatory) / Arrivals 34L (Mode 4) unless there would be significant delays to either departing or arriving aircraft or traffic complexity requires a variation or weather conditions preclude the use of 34L.
	3.	Departures 16L&R / Arrivals 25 (Mode 5) , or Departures 16L&R / Arrivals 07 (Mode 14A)
	4.	16 (Mode 10)

Rwy 34 and Rwy 16 Parallel Runway operations should only be considered for use if required for traffic management purposes during the following hours:

0700 to 1100 Monday to Saturday

0800 to 1100 Sunday

1500 to 2000 Sunday to Friday

In order to take advantage of suitable traffic dispositions, variations to these times will occur.

20 knot crosswind and 5 knot downwind criteria apply to all dry runway conditions

This is not an operational document. It has been prepared for information purposes only and is subject to change without notice.

Saturday and Sunday		
2300 to 0600	1.	Curfew – Departures 16R/Arrivals 34L (Mode 1)
0600 to 0700 Saturday	1.	SODPROPS - Departures 16L / Arrivals 34L
0600 to 0800 Sunday	2.	Curfew Act - Departures 16L&R/Arrivals 34L (Mode 4) unless there would be significant delays to either departing or arriving aircraft or traffic complexity requires a variation or weather conditions are not suitable
	3.	Departures 16L&R / Arrivals 25 (Mode 5) , or Departures 16L&R / Arrivals 07 (Mode 14A) , or Departures 34R, 25 & 34L / Arrivals 34L&R (Mode 8) , or Departures 25 / Arrivals 34L&R (Mode 7)
	4.	34 (Mode 9) or 16 (Mode 10)
	5.	07 (Mode 12) or 25 (Mode 13)
0700 to 2200 Saturday	1.	SODPROPS - Departures 16L / Arrivals 34L
0800 to 2200 Sunday	2.	Departures 16L&R / Arrivals 07 (Mode 14A) , or Departures 34R, 25 & 34L / Arrivals 34L&R (Mode 8) , or Departures 25 / Arrivals 34L&R (Mode 7) or Departures 16L&R / Arrivals 25 (Mode 5)
	3.	34 (Mode 9) or 16 (Mode 10)
	4.	07 (Mode 12) or 25 (Mode 13)
2200 to 2245	1.	SODPROPS - Departures 16L / Arrivals 34L
	2.	Departures 16L&R / Arrivals 34L (Mode 4) unless there would be significant delays to either departing or arriving aircraft or traffic complexity requires a variation or weather conditions are not suitable
	3.	Departures 16L&R / Arrivals 25 (Mode 5)
	4.	Departures 16L&R / Arrivals 07 (Mode 14A)
	5.	Departures 34R, 25 & 34L / Arrivals 34L&R (Mode 8)
	6.	Departures 25 / Arrivals 34L&R (Mode 7)
	7.	34 (Mode 9) or 16 (Mode 10)
	8.	07 (Mode 12) or 25 (Mode 13)
2245 to 2300	1.	SODPROPS - Departures 16L&R (Mandatory) / Arrivals 34L
	2.	Departures 16L&R (Mandatory) / Arrivals 34L (Mode 4) . The arrivals runway (34L) may be varied if there would be significant delays to either departing or arriving aircraft or traffic complexity requires a variation or weather conditions preclude the use of 34L. Departures 16L&R / Arrivals 25 (Mode 5) , or Departures 16L&R / Arrivals 07 (Mode 14A)
	3.	Departures 16L&R / Arrivals 07 (Mode 14A)
	4.	16 (Mode 10)

Runway Movement Summary – All Aircraft

Date	Runway 07			Runway 16 Left			Runway 16 Right			Runway 25			Runway 34 Left			Runway 34 Right			Day
	Arr	Dep	Total	Arr	Dep	Total	Arr	Dep	Total	Arr	Dep	Total	Arr	Dep	Total	Arr	Dep	Total	
01-Aug-08	0	0	0	0	0	0	0	12	12	147	136	283	187	140	327	96	145	241	863
02-Aug-08	1	0	1	0	0	0	0	0	0	174	182	356	125	75	200	40	69	109	666
03-Aug-08	2	0	2	50	108	158	93	97	190	0	11	11	169	79	248	54	85	139	748
04-Aug-08	0	0	0	96	99	195	137	177	314	0	17	17	142	63	205	44	65	109	840
05-Aug-08	0	0	0	99	103	202	150	201	351	0	18	18	125	43	168	48	50	98	837
06-Aug-08	0	0	0	149	130	279	191	281	472	35	1	36	42	6	48	6	10	16	851
07-Aug-08	0	0	0	0	1	1	0	18	18	1	38	39	270	181	451	153	193	346	855
08-Aug-08	2	0	2	113	128	241	149	225	374	93	66	159	72	16	88	4	0	4	868
09-Aug-08	0	0	0	0	18	18	1	2	3	0	115	115	243	110	353	97	80	177	666
10-Aug-08	0	0	0	0	0	0	0	2	2	34	200	234	217	114	331	119	67	186	753
11-Aug-08	0	0	0	29	75	104	44	118	162	109	63	172	167	80	247	65	80	145	830
12-Aug-08	1	0	1	9	15	24	15	42	57	62	109	171	224	131	355	104	118	222	830
13-Aug-08	0	0	0	106	89	195	143	252	395	58	15	73	74	30	104	41	36	77	844
14-Aug-08	0	0	0	0	0	0	0	32	32	203	220	423	141	83	224	76	92	168	847
15-Aug-08	0	0	0	26	24	50	37	73	110	33	73	106	222	135	357	113	136	249	872
16-Aug-08	0	0	0	76	65	141	142	169	311	15	11	26	74	34	108	35	47	82	668
17-Aug-08	0	0	0	95	133	228	161	234	395	40	0	40	70	12	82	0	0	0	745
18-Aug-08	0	0	0	99	104	203	164	192	356	0	15	15	106	45	151	43	57	100	825
19-Aug-08	0	0	0	0	81	81	0	22	22	21	0	21	297	165	462	85	129	214	800
20-Aug-08	3	0	3	0	10	10	0	11	11	2	26	28	261	173	434	141	189	330	816
21-Aug-08	1	0	1	0	26	26	0	13	13	0	17	17	300	176	476	132	198	330	863
22-Aug-08	0	0	0	163	126	289	236	301	537	31	3	34	7	0	7	0	0	0	867
23-Aug-08	0	0	0	106	91	197	201	238	439	34	1	35	1	0	1	0	0	0	672
24-Aug-08	0	0	0	69	124	193	126	245	371	119	0	119	51	4	55	0	0	0	738
25-Aug-08	0	0	0	0	0	0	0	6	6	0	18	18	280	181	461	141	223	364	849
26-Aug-08	0	0	0	0	57	57	0	13	13	0	13	13	322	169	491	107	171	278	852
27-Aug-08	0	0	0	175	120	295	245	307	552	1	1	2	8	0	8	0	0	0	857
28-Aug-08	0	0	0	162	118	280	246	305	551	11	1	12	7	0	7	0	0	0	850
29-Aug-08	0	0	0	101	99	200	149	246	395	62	14	76	80	40	120	49	50	99	890
30-Aug-08	0	0	0	0	12	12	1	26	27	28	0	28	220	136	356	90	152	242	665
31-Aug-08	0	0	0	0	0	0	0	6	6	12	27	39	233	173	406	120	174	294	745
Total	10	0	10	1723	1956	3679	2631	3866	6497	1325	1411	2736	4737	2594	7331	2003	2616	4619	24872

Runway Movement Summary – Jet Aircraft Only

Date	Runway 07			Runway 16 Left			Runway 16 Right			Runway 25			Runway 34 Left			Runway 34 Right			Day
	Arr	Dep	Total	Arr	Dep	Total	Arr	Dep	Total	Arr	Dep	Total	Arr	Dep	Total	Arr	Dep	Total	
01-Aug-08	0	0	0	0	0	0	0	5	5	101	95	196	152	92	244	60	122	182	627
02-Aug-08	0	0	0	0	0	0	0	0	0	120	132	252	111	63	174	29	65	94	520
03-Aug-08	0	0	0	31	92	123	71	64	135	0	7	7	149	53	202	39	72	111	578
04-Aug-08	0	0	0	60	72	132	97	123	220	0	14	14	113	39	152	27	54	81	599
05-Aug-08	0	0	0	65	73	138	112	148	260	0	16	16	109	27	136	27	39	66	616
06-Aug-08	0	0	0	95	92	187	143	204	347	27	0	27	37	3	40	3	10	13	614
07-Aug-08	0	0	0	0	0	0	0	9	9	0	31	31	209	114	323	98	156	254	617
08-Aug-08	0	0	0	74	94	168	109	163	272	64	45	109	62	12	74	3	0	3	626
09-Aug-08	0	0	0	0	17	17	1	0	1	0	96	96	200	82	282	65	63	128	524
10-Aug-08	0	0	0	0	0	0	0	1	1	27	148	175	184	87	271	76	52	128	575
11-Aug-08	0	0	0	21	57	78	34	87	121	73	46	119	135	47	182	38	66	104	604
12-Aug-08	0	0	0	7	10	17	12	28	40	44	80	124	178	80	258	59	96	155	594
13-Aug-08	0	0	0	71	60	131	101	185	286	43	11	54	61	15	76	23	29	52	599
14-Aug-08	0	0	0	0	0	0	0	24	24	135	153	288	115	51	166	50	73	123	601
15-Aug-08	0	0	0	18	15	33	24	52	76	25	54	79	175	85	260	70	110	180	628
16-Aug-08	0	0	0	58	53	111	105	138	243	15	9	24	62	21	83	21	38	59	520
17-Aug-08	0	0	0	70	104	174	127	176	303	27	0	27	66	10	76	0	0	0	580
18-Aug-08	0	0	0	63	77	140	124	149	273	0	12	12	90	20	110	25	47	72	607
19-Aug-08	0	0	0	0	67	67	0	13	13	18	0	18	225	98	323	47	106	153	574
20-Aug-08	1	0	1	0	10	10	0	4	4	0	23	23	203	103	306	84	149	233	577
21-Aug-08	0	0	0	0	23	23	0	7	7	0	12	12	229	103	332	80	161	241	615
22-Aug-08	0	0	0	95	90	185	195	221	416	23	1	24	6	0	6	0	0	0	631
23-Aug-08	0	0	0	69	70	139	159	190	349	33	0	33	0	0	0	0	0	0	521
24-Aug-08	0	0	0	51	90	141	95	189	284	89	0	89	48	0	48	0	0	0	562
25-Aug-08	0	0	0	0	0	0	0	2	2	0	14	14	212	112	324	93	184	277	617
26-Aug-08	0	0	0	0	47	47	0	5	5	0	11	11	249	102	351	64	140	204	618
27-Aug-08	0	0	0	107	79	186	197	231	428	1	0	1	5	0	5	0	0	0	620
28-Aug-08	0	0	0	95	80	175	198	229	427	11	0	11	6	0	6	0	0	0	619
29-Aug-08	0	0	0	62	69	131	110	180	290	49	10	59	65	22	87	30	40	70	637
30-Aug-08	0	0	0	0	12	12	1	20	21	27	0	27	171	97	268	60	126	186	514
31-Aug-08	0	0	0	0	0	0	0	4	4	9	25	34	190	115	305	89	145	234	577
Total	1	0	1	1112	1453	2565	2015	2851	4866	961	1045	2006	3817	1653	5470	1260	2143	3403	18311

Runway Movement Summary – Non Jet Aircraft Only

Date	Runway 07			Runway 16 Left			Runway 16 Right			Runway 25			Runway 34 Left			Runway 34 Right			Day
	Arr	Dep	Total	Arr	Dep	Total	Arr	Dep	Total	Arr	Dep	Total	Arr	Dep	Total	Arr	Dep	Total	
01-Aug-08	0	0	0	0	0	0	0	7	7	46	41	87	35	48	83	36	23	59	236
02-Aug-08	1	0	1	0	0	0	0	0	0	54	50	104	14	12	26	11	4	15	146
03-Aug-08	2	0	2	19	16	35	22	33	55	0	4	4	20	26	46	15	13	28	170
04-Aug-08	0	0	0	36	27	63	40	54	94	0	3	3	29	24	53	17	11	28	241
05-Aug-08	0	0	0	34	30	64	38	53	91	0	2	2	16	16	32	21	11	32	221
06-Aug-08	0	0	0	54	38	92	48	77	125	8	1	9	5	3	8	3	0	3	237
07-Aug-08	0	0	0	0	1	1	0	9	9	1	7	8	61	67	128	55	37	92	238
08-Aug-08	2	0	2	39	34	73	40	62	102	29	21	50	10	4	14	1	0	1	242
09-Aug-08	0	0	0	0	1	1	0	2	2	0	19	19	43	28	71	32	17	49	142
10-Aug-08	0	0	0	0	0	0	0	1	1	7	52	59	33	27	60	43	15	58	178
11-Aug-08	0	0	0	8	18	26	10	31	41	36	17	53	32	33	65	27	14	41	226
12-Aug-08	1	0	1	2	5	7	3	14	17	18	29	47	46	51	97	45	22	67	236
13-Aug-08	0	0	0	35	29	64	42	67	109	15	4	19	13	15	28	18	7	25	245
14-Aug-08	0	0	0	0	0	0	0	8	8	68	67	135	26	32	58	26	19	45	246
15-Aug-08	0	0	0	8	9	17	13	21	34	8	19	27	47	50	97	43	26	69	244
16-Aug-08	0	0	0	18	12	30	37	31	68	0	2	2	12	13	25	14	9	23	148
17-Aug-08	0	0	0	25	29	54	34	58	92	13	0	13	4	2	6	0	0	0	165
18-Aug-08	0	0	0	36	27	63	40	43	83	0	3	3	16	25	41	18	10	28	218
19-Aug-08	0	0	0	0	14	14	0	9	9	3	0	3	72	67	139	38	23	61	226
20-Aug-08	2	0	2	0	0	0	0	7	7	2	3	5	58	70	128	57	40	97	239
21-Aug-08	1	0	1	0	3	3	0	6	6	0	5	5	71	73	144	52	37	89	248
22-Aug-08	0	0	0	68	36	104	41	80	121	8	2	10	1	0	1	0	0	0	236
23-Aug-08	0	0	0	37	21	58	42	48	90	1	1	2	1	0	1	0	0	0	151
24-Aug-08	0	0	0	18	34	52	31	56	87	30	0	30	3	4	7	0	0	0	176
25-Aug-08	0	0	0	0	0	0	0	4	4	0	4	4	68	69	137	48	39	87	232
26-Aug-08	0	0	0	0	10	10	0	8	8	0	2	2	73	67	140	43	31	74	234
27-Aug-08	0	0	0	68	41	109	48	76	124	0	1	1	3	0	3	0	0	0	237
28-Aug-08	0	0	0	67	38	105	48	76	124	0	1	1	1	0	1	0	0	0	231
29-Aug-08	0	0	0	39	30	69	39	66	105	13	4	17	15	18	33	19	10	29	253
30-Aug-08	0	0	0	0	0	0	0	6	6	1	0	1	49	39	88	30	26	56	151
31-Aug-08	0	0	0	0	0	0	0	2	2	3	2	5	43	58	101	31	29	60	168
Total	9	0	9	611	503	1114	616	1015	1631	364	366	730	920	941	1861	743	473	1216	6561

Hourly Runway Movement Summary – All Movements

Date	0:00	1:00	2:00	3:00	4:00	5:00	6:00	7:00	8:00	9:00	10:00	11:00	12:00	13:00	14:00	15:00	16:00	17:00	18:00	19:00	20:00	21:00	22:00	23:00	Total
01-Aug-08	4	1	1	4	1	4	33	66	68	62	55	45	47	38	40	42	51	58	60	53	48	38	41	3	863
02-Aug-08	0	2	1	0	1	4	25	52	53	51	46	44	48	46	35	44	37	36	42	33	28	23	14	1	666
03-Aug-08	0	2	0	1	1	3	23	39	52	40	57	51	41	36	50	48	49	47	64	65	39	23	16	1	748
04-Aug-08	0	0	0	0	0	4	34	68	66	56	56	52	42	41	50	50	51	50	67	57	31	26	30	9	840
05-Aug-08	6	2	0	5	1	4	36	66	66	60	52	52	42	33	51	50	52	50	62	59	31	29	23	5	837
06-Aug-08	5	1	1	3	2	5	36	56	66	65	49	52	44	37	45	54	49	55	65	62	36	34	24	5	851
07-Aug-08	7	0	1	4	1	7	34	65	68	52	53	48	54	35	39	29	61	61	58	52	51	35	35	5	855
08-Aug-08	4	3	3	3	0	2	38	59	68	57	48	48	48	41	48	67	53	58	66	61	38	30	23	2	868
09-Aug-08	0	1	0	1	1	4	28	56	62	49	57	49	43	32	47	40	34	39	32	36	24	18	13	0	666
10-Aug-08	2	0	0	3	0	3	25	38	53	43	52	45	47	40	45	47	47	47	60	64	45	33	14	0	753
11-Aug-08	2	0	0	0	0	4	32	62	67	53	51	53	50	40	46	53	52	45	68	52	38	29	25	8	830
12-Aug-08	5	1	2	5	0	3	41	61	62	60	52	48	41	37	38	53	55	44	63	59	35	32	25	8	830
13-Aug-08	6	0	2	3	2	5	33	68	64	57	52	54	40	31	48	54	54	48	63	59	32	36	26	7	844
14-Aug-08	6	1	2	4	0	4	32	65	65	58	49	47	48	44	33	44	48	50	47	57	56	48	34	5	847
15-Aug-08	5	0	1	6	3	2	37	59	61	66	53	53	49	37	47	57	54	46	69	54	48	39	25	1	872
16-Aug-08	0	1	1	0	3	5	24	54	65	47	56	50	45	31	40	48	35	34	34	39	26	18	11	1	668
17-Aug-08	0	0	0	0	0	3	24	38	52	39	54	48	43	37	42	48	60	46	64	62	34	29	21	1	745
18-Aug-08	0	0	0	0	0	3	32	63	72	54	56	51	41	39	42	59	49	50	66	41	39	36	27	5	825
19-Aug-08	5	0	2	5	0	2	35	55	67	58	51	49	44	36	43	47	46	47	63	51	33	28	27	6	800
20-Aug-08	5	0	4	2	0	3	36	60	60	51	52	48	38	35	51	47	54	52	63	52	37	39	21	6	816
21-Aug-08	5	3	2	3	0	5	35	68	68	49	53	62	45	34	49	51	48	49	56	68	37	37	28	8	863
22-Aug-08	5	2	2	3	0	3	27	62	62	63	55	56	53	38	35	55	58	50	62	60	43	41	29	3	867
23-Aug-08	1	2	2	1	0	0	27	54	56	57	53	48	40	39	46	46	38	30	39	39	21	16	15	2	672
24-Aug-08	0	1	1	0	0	2	26	39	47	46	47	45	49	36	41	53	57	51	60	59	37	24	17	0	738
25-Aug-08	1	1	0	0	0	3	39	64	69	57	56	57	47	38	47	49	54	47	69	51	43	27	25	5	849
26-Aug-08	7	0	2	4	1	3	44	75	70	55	52	50	41	39	41	52	54	43	63	58	38	29	25	6	852
27-Aug-08	5	1	2	4	0	2	38	67	62	61	54	52	40	35	48	52	60	50	62	63	39	28	27	5	857
28-Aug-08	1	0	2	4	1	2	36	59	66	60	50	53	49	37	49	49	56	47	64	61	42	31	26	5	850
29-Aug-08	6	1	3	4	1	6	38	63	63	67	59	53	45	41	52	49	58	48	72	59	48	29	22	3	890
30-Aug-08	0	2	1	2	0	3	24	63	63	49	50	52	39	33	48	44	37	34	33	37	22	16	11	2	665
31-Aug-08	2	0	1	0	1	3	27	42	46	41	56	46	43	37	44	52	47	45	39	51	49	42	31	0	745
Total	95	28	39	74	20	106	999	1806	1929	1683	1636	1561	1386	1153	1380	1533	1558	1457	1795	1674	1168	943	731	118	24872
Avg.	3.06	0.90	1.26	2.39	0.65	3.42	32.23	58.26	62.23	54.29	52.77	50.35	44.71	37.19	44.52	49.45	50.26	47.00	57.90	54.00	37.68	30.42	23.58	3.81	802.32

Hourly Runway Movement Summary – Arrivals

Date	0:00	1:00	2:00	3:00	4:00	5:00	6:00	7:00	8:00	9:00	10:00	11:00	12:00	13:00	14:00	15:00	16:00	17:00	18:00	19:00	20:00	21:00	22:00	23:00	Total
01-Aug-08	0	0	1	2	0	4	21	38	36	26	23	22	21	12	23	22	25	31	26	25	26	18	27	1	430
02-Aug-08	0	1	1	0	0	4	16	32	26	23	22	22	23	15	18	24	20	23	21	16	12	11	9	1	340
03-Aug-08	0	0	0	1	1	2	16	22	24	17	24	24	17	13	30	16	29	28	37	24	18	11	13	1	368
04-Aug-08	0	0	0	0	0	4	20	41	32	20	27	26	18	17	31	19	25	30	35	20	14	15	21	4	419
05-Aug-08	0	2	0	3	0	4	22	39	35	25	25	27	17	16	29	18	26	30	33	22	18	16	15	0	422
06-Aug-08	1	0	1	2	0	4	24	27	35	30	19	29	23	14	27	20	26	30	36	24	16	17	16	2	423
07-Aug-08	1	0	1	2	0	7	21	39	32	19	27	26	21	15	26	16	25	30	24	32	19	19	21	1	424
08-Aug-08	1	2	3	1	0	1	25	34	35	25	21	20	23	20	28	29	24	31	36	26	17	13	18	0	433
09-Aug-08	0	0	0	1	1	4	21	35	28	21	26	25	17	12	26	20	20	24	19	15	9	9	8	0	341
10-Aug-08	0	0	0	3	0	3	18	23	20	19	23	24	17	15	25	19	23	25	35	36	15	17	10	0	370
11-Aug-08	1	0	0	0	0	4	18	36	37	23	22	25	24	13	26	25	22	27	38	21	16	16	16	4	414
12-Aug-08	1	1	2	3	0	2	25	38	30	27	24	27	18	12	21	26	21	24	38	22	19	16	16	2	415
13-Aug-08	1	0	2	2	1	5	21	39	35	21	24	26	18	12	27	21	29	24	37	25	13	23	14	2	422
14-Aug-08	1	0	2	2	0	4	19	39	29	24	24	26	21	12	17	25	25	24	23	29	32	18	23	1	420
15-Aug-08	0	0	1	4	1	2	22	32	34	28	25	25	20	15	32	21	23	25	41	23	20	21	15	1	431
16-Aug-08	0	0	1	0	3	4	16	32	35	16	27	26	18	12	22	24	18	21	23	17	10	7	9	1	342
17-Aug-08	0	0	0	0	0	3	17	21	24	17	25	23	14	16	21	24	27	27	37	28	13	14	14	1	366
18-Aug-08	0	0	0	0	0	3	19	38	39	18	22	27	18	19	24	28	21	28	37	18	14	22	15	2	412
19-Aug-08	0	0	1	3	0	2	22	32	41	24	25	21	21	14	22	19	24	25	35	21	16	16	17	2	403
20-Aug-08	1	0	3	0	0	3	23	37	31	19	21	25	14	17	28	18	29	28	37	18	21	19	12	3	407
21-Aug-08	0	2	1	2	0	5	20	42	35	20	27	30	18	11	34	15	26	28	32	27	15	22	18	3	433
22-Aug-08	1	0	2	1	0	3	24	30	37	26	17	29	25	16	20	33	23	27	35	28	22	17	20	1	437
23-Aug-08	0	2	1	1	0	0	18	30	28	26	21	24	15	19	26	22	22	20	21	19	10	6	10	1	342
24-Aug-08	0	1	1	0	0	2	18	22	18	21	21	21	21	15	22	23	30	27	35	24	17	13	13	0	365
25-Aug-08	0	1	0	0	0	3	22	36	40	19	24	30	20	17	24	20	25	28	35	22	20	18	15	2	421
26-Aug-08	0	0	2	2	1	3	31	43	34	23	25	28	15	17	26	17	29	22	34	23	19	16	17	2	429
27-Aug-08	0	1	2	2	0	2	24	36	33	26	25	24	19	12	28	24	28	23	37	29	20	15	17	2	429
28-Aug-08	0	0	2	2	0	2	20	34	39	21	24	29	18	15	31	20	25	27	32	29	20	19	16	1	426
29-Aug-08	0	1	3	1	0	6	23	29	36	30	22	28	19	19	31	20	29	24	36	28	22	16	17	1	441
30-Aug-08	0	0	1	2	0	3	17	37	28	19	23	28	17	12	27	22	21	19	20	14	11	9	7	2	339
31-Aug-08	0	0	1	0	1	3	18	24	20	18	25	21	17	12	24	22	25	25	20	26	25	21	17	0	365
Total	9	14	35	42	9	101	641	1037	986	691	730	788	587	456	796	672	765	805	985	731	539	490	476	44	12429
Avg.	0.29	0.45	1.13	1.35	0.29	3.26	20.68	33.45	31.81	22.29	23.55	25.42	18.94	14.71	25.68	21.68	24.68	25.97	31.77	23.58	17.39	15.81	15.35	1.42	400.94

Hourly Runway Movement Summary – Departures

Date	0:00	1:00	2:00	3:00	4:00	5:00	6:00	7:00	8:00	9:00	10:00	11:00	12:00	13:00	14:00	15:00	16:00	17:00	18:00	19:00	20:00	21:00	22:00	23:00	Total
01-Aug-08	4	1	0	2	1	0	12	28	32	36	32	23	26	26	17	20	26	27	34	28	22	20	14	2	433
02-Aug-08	0	1	0	0	1	0	9	20	27	28	24	22	25	31	17	20	17	13	21	17	16	12	5	0	326
03-Aug-08	0	2	0	0	0	1	7	17	28	23	33	27	24	23	20	32	20	19	27	41	21	12	3	0	380
04-Aug-08	0	0	0	0	0	0	14	27	34	36	29	26	24	24	19	31	26	20	32	37	17	11	9	5	421
05-Aug-08	6	0	0	2	1	0	14	27	31	35	27	25	25	17	22	32	26	20	29	37	13	13	8	5	415
06-Aug-08	4	1	0	1	2	1	12	29	31	35	30	23	21	23	18	34	23	25	29	38	20	17	8	3	428
07-Aug-08	6	0	0	2	1	0	13	26	36	33	26	22	33	20	13	13	36	31	34	20	32	16	14	4	431
08-Aug-08	3	1	0	2	0	1	13	25	33	32	27	28	25	21	20	38	29	27	30	35	21	17	5	2	435
09-Aug-08	0	1	0	0	0	0	7	21	34	28	31	24	26	20	21	20	14	15	13	21	15	9	5	0	325
10-Aug-08	2	0	0	0	0	0	7	15	33	24	29	21	30	25	20	28	24	22	25	28	30	16	4	0	383
11-Aug-08	1	0	0	0	0	0	14	26	30	30	29	28	26	27	20	28	30	18	30	31	22	13	9	4	416
12-Aug-08	4	0	0	2	0	1	16	23	32	33	28	21	23	25	17	27	34	20	25	37	16	16	9	6	415
13-Aug-08	5	0	0	1	1	0	12	29	29	36	28	28	22	19	21	33	25	24	26	34	19	13	12	5	422
14-Aug-08	5	1	0	2	0	0	13	26	36	34	25	21	27	32	16	19	23	26	24	28	24	30	11	4	427
15-Aug-08	5	0	0	2	2	0	15	27	27	38	28	28	29	22	15	36	31	21	28	31	28	18	10	0	441
16-Aug-08	0	1	0	0	0	1	8	22	30	31	29	24	27	19	18	24	17	13	11	22	16	11	2	0	326
17-Aug-08	0	0	0	0	0	0	7	17	28	22	29	25	29	21	21	24	33	19	27	34	21	15	7	0	379
18-Aug-08	0	0	0	0	0	0	13	25	33	36	34	24	23	20	18	31	28	22	29	23	25	14	12	3	413
19-Aug-08	5	0	1	2	0	0	13	23	26	34	26	28	23	22	21	28	22	22	28	30	17	12	10	4	397
20-Aug-08	4	0	1	2	0	0	13	23	29	32	31	23	24	18	23	29	25	24	26	34	16	20	9	3	409
21-Aug-08	5	1	1	1	0	0	15	26	33	29	26	32	27	23	15	36	22	21	24	41	22	15	10	5	430
22-Aug-08	4	2	0	2	0	0	3	32	25	37	38	27	28	22	15	22	35	23	27	32	21	24	9	2	430
23-Aug-08	1	0	1	0	0	0	9	24	28	31	32	24	25	20	20	24	16	10	18	20	11	10	5	1	330
24-Aug-08	0	0	0	0	0	0	8	17	29	25	26	24	28	21	19	30	27	24	25	35	20	11	4	0	373
25-Aug-08	1	0	0	0	0	0	17	28	29	38	32	27	27	21	23	29	29	19	34	29	23	9	10	3	428
26-Aug-08	7	0	0	2	0	0	13	32	36	32	27	22	26	22	15	35	25	21	29	35	19	13	8	4	423
27-Aug-08	5	0	0	2	0	0	14	31	29	35	29	28	21	23	20	28	32	27	25	34	19	13	10	3	428
28-Aug-08	1	0	0	2	1	0	16	25	27	39	26	24	31	22	18	29	31	20	32	32	22	12	10	4	424
29-Aug-08	6	0	0	3	1	0	15	34	27	37	37	25	26	22	21	29	29	24	36	31	26	13	5	2	449
30-Aug-08	0	2	0	0	0	0	7	26	35	30	27	24	22	21	21	22	16	15	13	23	11	7	4	0	326
31-Aug-08	2	0	0	0	0	0	9	18	26	23	31	25	26	25	20	30	22	20	19	25	24	21	14	0	380
Total	86	14	4	32	11	5	358	769	943	992	906	773	799	697	584	861	793	652	810	943	629	453	255	74	12443
Avg.	2.77	0.45	0.13	1.03	0.35	0.16	11.55	24.81	30.42	32.00	29.23	24.94	25.77	22.48	18.84	27.77	25.58	21.03	26.13	30.42	20.29	14.61	8.23	2.39	401.39

Mode Utilisation Summary (Total Hours by Day)

Date	Curfew	16/34	Sod props	Mode 5 16/25	Mode 7 25/34	Mode 8 25/34	Mode 9 34	Mode 10 16	Mode 12 07	Mode 13 25	Mode14A 16/07	Other
01-Aug-08	7:00	-	-	0:15	1:03	-	9:02	-	-	6:40	-	-
02-Aug-08	7:00	-	-	-	0:41	-	8:23	-	-	7:56	-	-
03-Aug-08	7:00	0:23	2:32	-	1:00	-	6:23	6:41	-	-	-	-
04-Aug-08	7:00	0:10	2:52	-	1:05	-	3:36	9:17	-	-	-	-
05-Aug-08	7:00	-	3:05	-	1:03	-	2:52	10:00	-	-	-	-
06-Aug-08	7:00	0:02	0:46	2:04	-	-	1:04	13:04	-	-	-	-
07-Aug-08	7:00	0:14	-	-	1:47	-	14:59	-	-	-	-	-
08-Aug-08	7:00	0:19	2:45	2:08	0:54	-	-	8:45	-	2:09	-	-
09-Aug-08	7:00	0:30	1:12	-	9:34	-	5:44	-	-	-	-	-
10-Aug-08	7:00	0:27	-	-	9:47	-	5:17	-	-	1:29	-	-
11-Aug-08	7:00	0:10	2:55	3:20	0:59	-	4:57	2:43	-	1:56	-	-
12-Aug-08	7:00	0:20	0:16	-	2:50	-	9:07	1:04	-	3:23	-	-
13-Aug-08	7:00	0:12	-	4:11	1:01	-	2:14	9:21	-	-	-	-
14-Aug-08	7:00	0:13	-	-	0:49	-	6:46	-	-	9:11	-	-
15-Aug-08	7:00	0:25	-	0:50	3:26	-	8:55	2:39	-	0:45	-	-
16-Aug-08	7:00	-	-	2:25	1:02	-	3:05	10:28	-	-	-	-
17-Aug-08	7:00	0:27	3:52	2:05	-	-	-	10:36	-	-	-	-
18-Aug-08	7:00	0:15	1:50	-	1:04	-	2:53	10:58	-	-	-	-
19-Aug-08	7:00	0:23	5:13	0:59	-	-	10:25	-	-	-	-	-
20-Aug-08	7:00	0:18	0:43	-	2:06	-	13:53	-	-	-	-	-
21-Aug-08	7:00	0:07	2:31	-	1:08	-	13:13	-	-	-	-	-
22-Aug-08	7:00	0:05	-	1:33	-	-	-	15:22	-	-	-	-
23-Aug-08	7:00	0:14	-	3:16	-	-	-	13:30	-	-	-	-
24-Aug-08	7:00	0:28	2:17	6:28	-	-	-	7:46	-	-	-	-
25-Aug-08	7:00	0:24	-	-	0:45	-	15:51	-	-	-	-	-
26-Aug-08	7:00	0:17	4:33	-	0:49	-	11:21	-	-	-	-	-
27-Aug-08	7:00	0:11	-	-	-	-	-	16:49	-	-	-	-
28-Aug-08	7:00	0:04	-	0:37	-	-	-	16:19	-	-	-	-
29-Aug-08	7:00	0:15	-	3:08	0:56	-	2:54	9:47	-	-	-	-
30-Aug-08	7:00	0:31	0:57	2:40	-	-	12:52	-	-	-	-	-
31-Aug-08	7:00	0:28	-	-	1:29	-	14:32	-	-	0:31	-	-
Total	217:00	7:52	38:20	36:00	45:19	-	190:18	175:09	-	34:01	-	-
% Used		1.49%	7.28%	6.83%	8.60%	0.00%	36.11%	33.24%	0.00%	6.45%	0.00%	0.00%

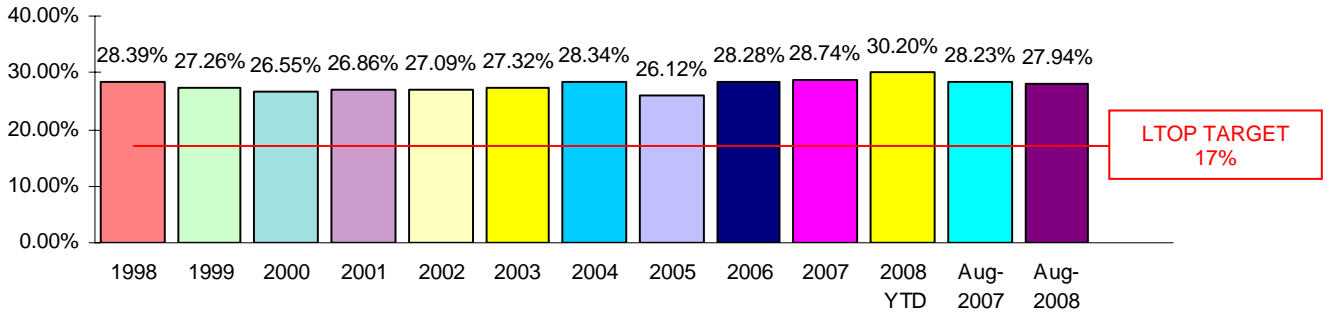
Cumulative Mode Utilisation from 1 January 2008

Time	1.42%	3.67%	7.32%	6.03%	0.00%	34.78%	38.53%	0.14%	2.33%	5.73%	0.05%
Movements	0.36%	2.46%	5.56%	4.43%	0.00%	38.35%	41.95%	0.13%	2.20%	4.52%	0.04%

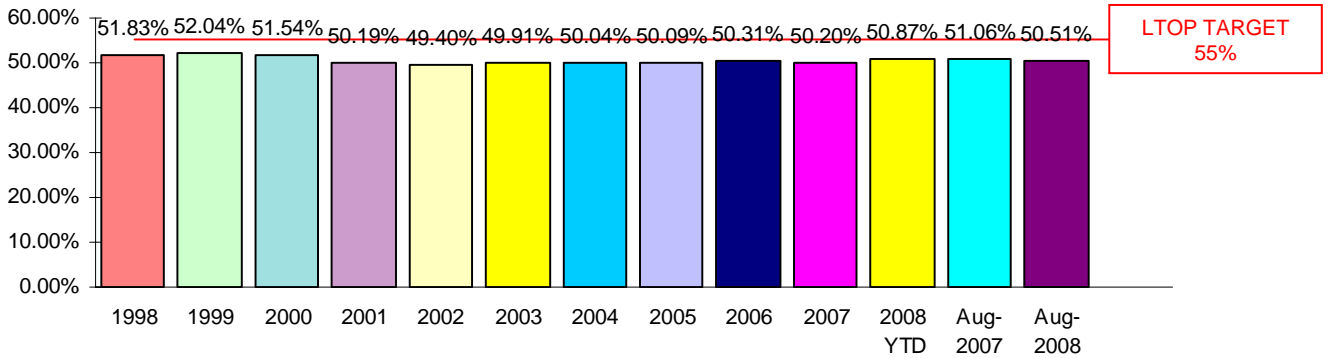
Runway End Impact to 31 August 2008

Includes comparisons with annual figures for 1998 to 2007, 2008 Year to Date, current month this year and corresponding month last year.

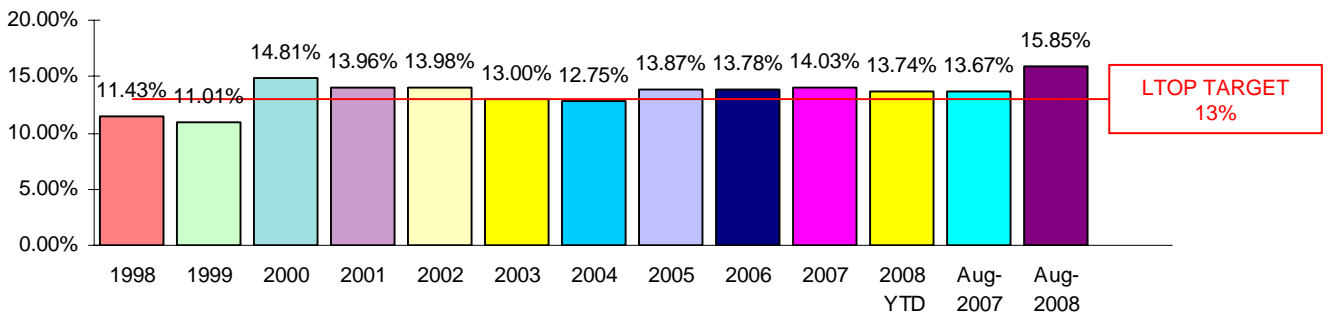
NORTH



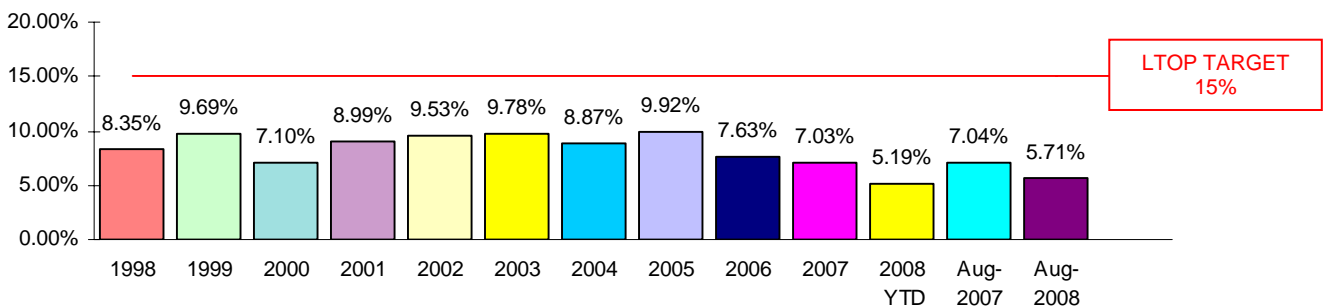
SOUTH



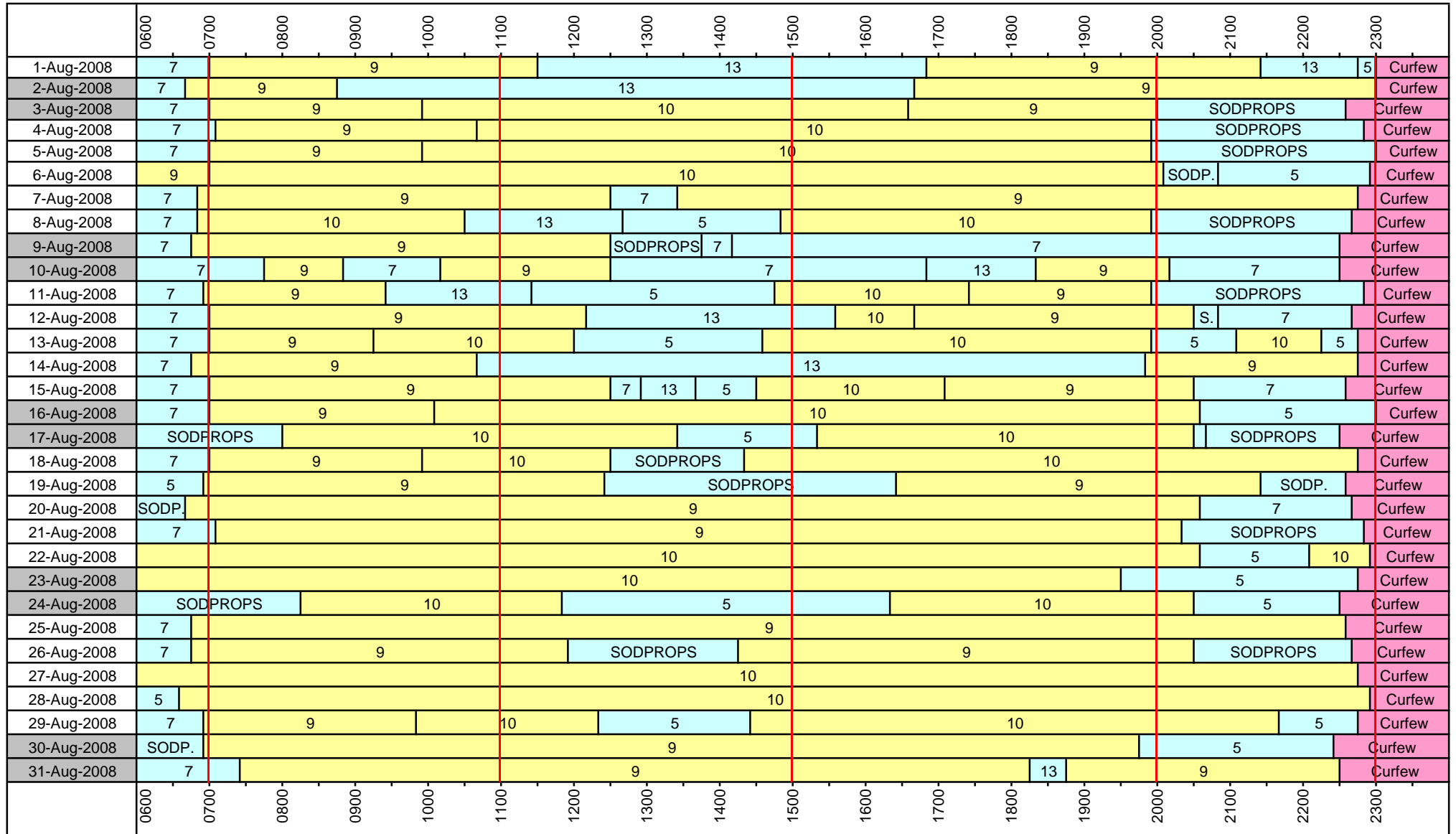
EAST



WEST



Sydney Airport - Daily Mode Usage



Weekend

Curfew Mode CURFEW: Dep 16R Arr 34L

Parallel Modes M9: Dep 34L+R Arr 34L+R M10: Dep 16L+R Arr 16L+R

Crossing Modes SODPROPS: Dep 16L Arr 34L M5: Dep 16L+R Arr 25 M7: Dep 25 Arr 34L+R M8: Dep 25 34R Arr 34L+R M12: Dep 07 Arr 07 M13: Dep 25 Arr 25 M14A: Dep 16L+R Arr 07

Precision Runway Monitor (PRM) Operations

In June 2002 at Sydney Airport, Airservices Australia commenced operation of the Precision Runway Monitor (PRM), a highly accurate radar system, to monitor landing operations arriving from the North. PRM landings from the South have been operating since 1999. The PRM supplements the existing Instrument Landing System (ILS), and is only used by Air Traffic Control during poor weather conditions thereby reducing air traffic delays due to weather.

The PRM operation involves two changes in procedure for arrivals from the North (Runway 16)

- Aircraft make their final turn to line up with the runways about 5-10km further north of the airport than during ILS operation.
- Within this extended area aircraft may fly at a fixed altitude of 3000ft (under ILS operation 3000-4000ft).

Airservices Australia conducted a 6 month Noise Monitoring Program from June 2002 until December 2002, which included regular reporting to Environment Australia and the community, to meet the requirements of the Minister for the Environment and Heritage.

Portable Noise Monitors, which were installed in suburbs affected by PRM changes, have since been removed with the cessation of the Noise Monitoring Program.

Nevertheless Airservices Australia Noise Enquiry Service continues to collect daily statistical data relating to PRM operations on Runway 16 and associated issues. Below is a summary of data collected for **August 2008**:

Days on which Runway 16 PRM was used and hours of usage (ATIS time)

Date	PRM		Hours of PRM operation
	Start Time	End Time	
August-08	-	-	-

Number of Runway 16 arrivals during PRM operations and their runway assignment

Date	Number of arrivals on Runway 16 during PRM	Runway assignment	
		16L	16R
August-08	-	-	-

Complaints and complainants by suburb, specifically mentioning PRM operations

Suburb	Number of complaints	Number of complainants
-	-	-

Noise Enquiry Service

The Noise Enquiry Service is a function of Airservices Australia located at Sydney Airport. For more information visit the website at:

www.airservicesaustralia.com

The practices of the Service comply with the requirements of:

The Privacy Act 1988 (Commonwealth)

www.privacy.gov.au

The Telecommunications Act 1997 (Commonwealth)

www.acma.gov.au

The responsibilities of the Service include the recording of complaints, comments and enquiries regarding aircraft operations and noise for flights within Australia.

The Service is available **from 9 am to 5 pm, Monday to Friday** Australian Eastern Standard Time / Eastern Daylight Saving Time. Outside of these hours Voice Mail is used to record these calls. The Service can be contacted by:

telephone	1-800-802-584
facsimile	(02) 9556-6641
e-mail	community.relations@airservicesaustralia.com

In addition complaints can be lodged via the internet at:

www.airservicesaustralia.com/ncm

Complaints received are entered directly into a computer database. Any personal information collected is protected and will not be passed onto any unrelated parties. Statistical information generated from the computer database is produced for this Report, and is also made available to the Sydney Airport Community Forum (SACF). For more information visit the website at:

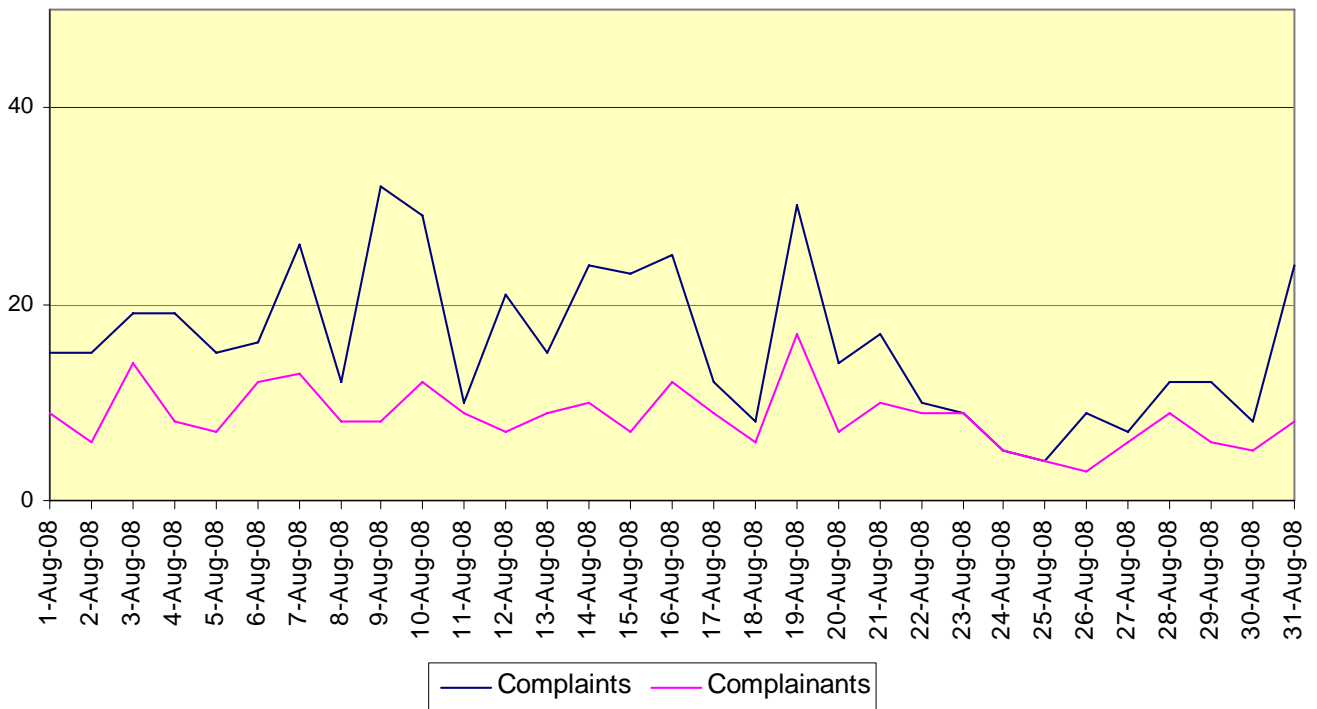
www.sacf.dotars.gov.au

Summary of Section Activity – August 2008

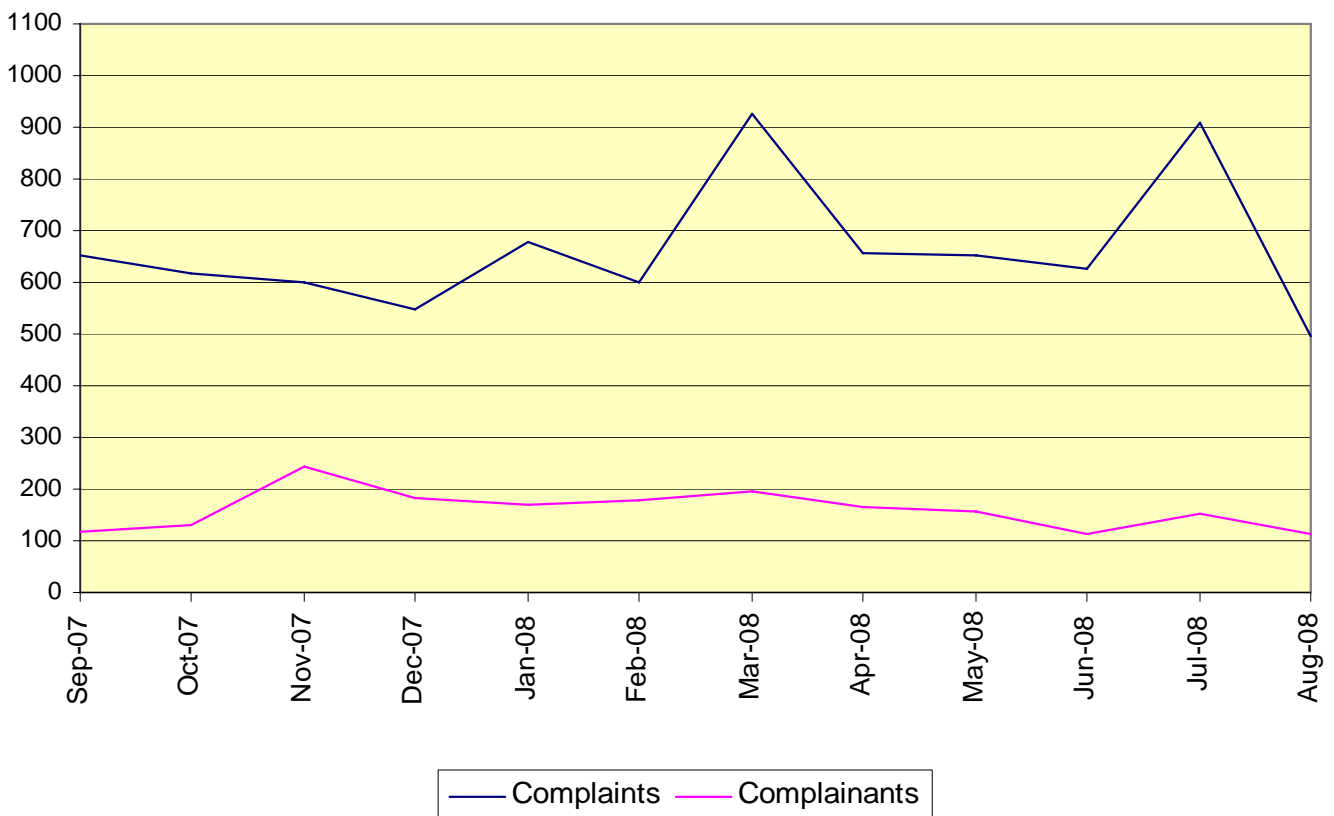
➤ Sydney Suburbs Complaints	
• By phone.....	200
• By correspondence	24
• By internet.....	117
• By e-mail.....	156
➤ Sydney Suburbs Complaints – suburb not specified	11
➤ Sydney Suburbs Comments and Enquiries	43
➤ Other than Sydney Suburbs or Sydney Airport (NSW Only) Complaints.....	31
➤ Other than Sydney Suburbs or Sydney Airport (NSW Only) Comments and Enquiries	11
➤ Callback / Information Requests (NSW Only).....	150

Complaints Graphs

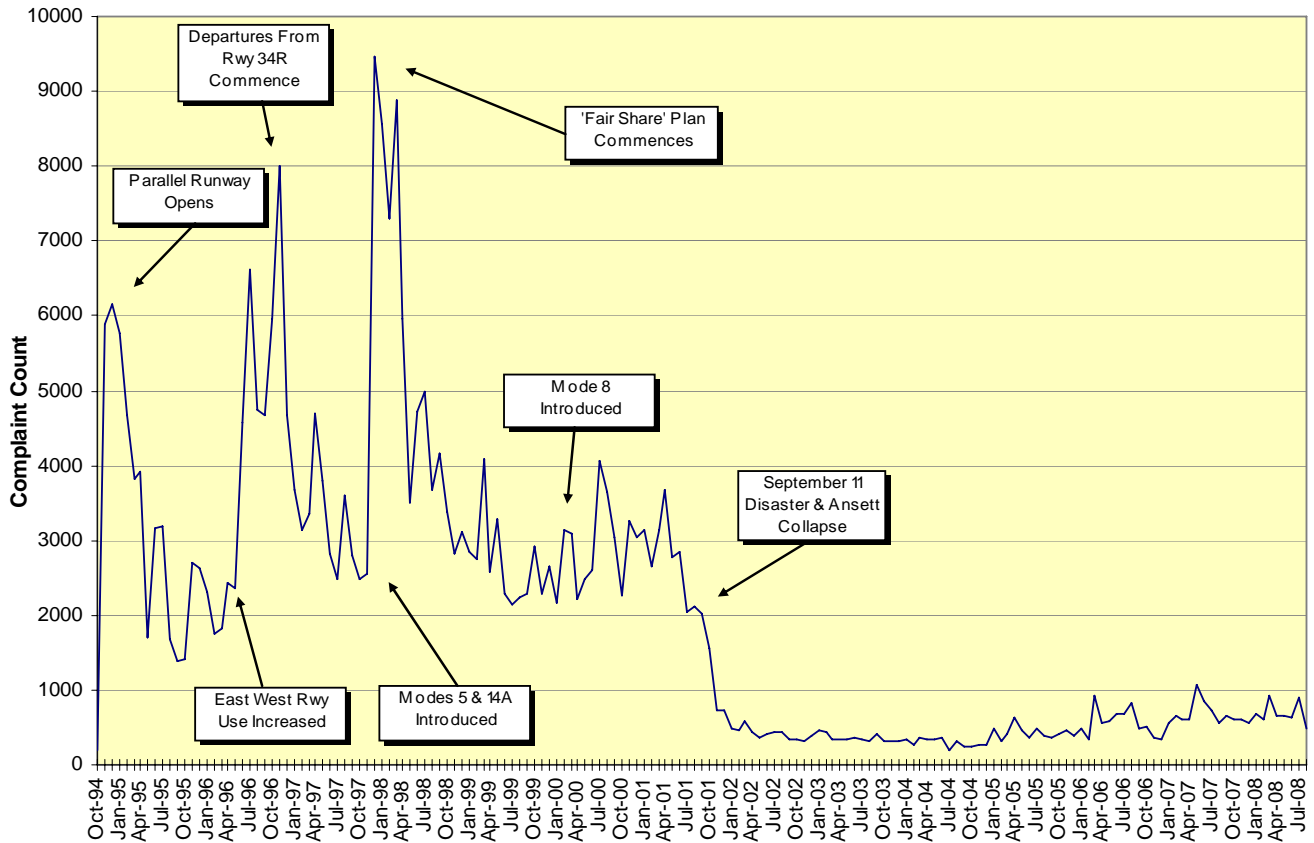
Complaints vs Complainants – 1 August to 31 August 2008



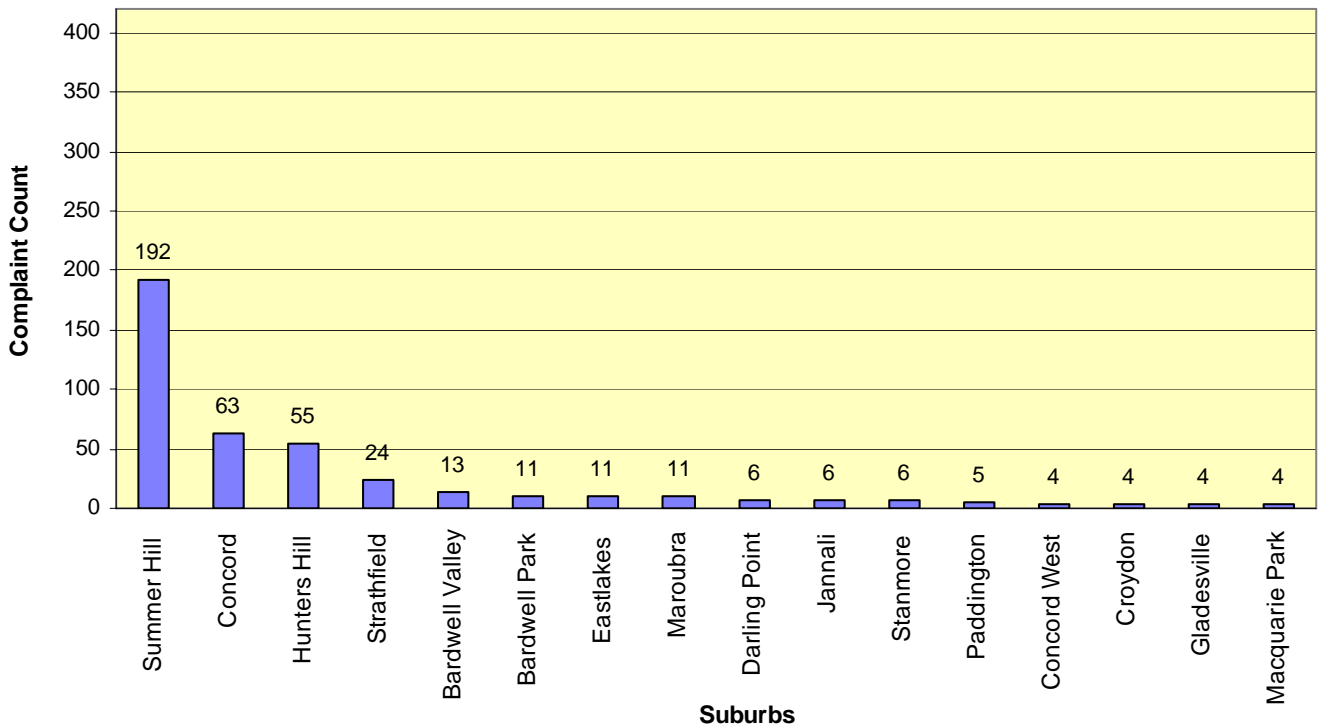
Complaints vs Complainants – Monthly



Complaints History

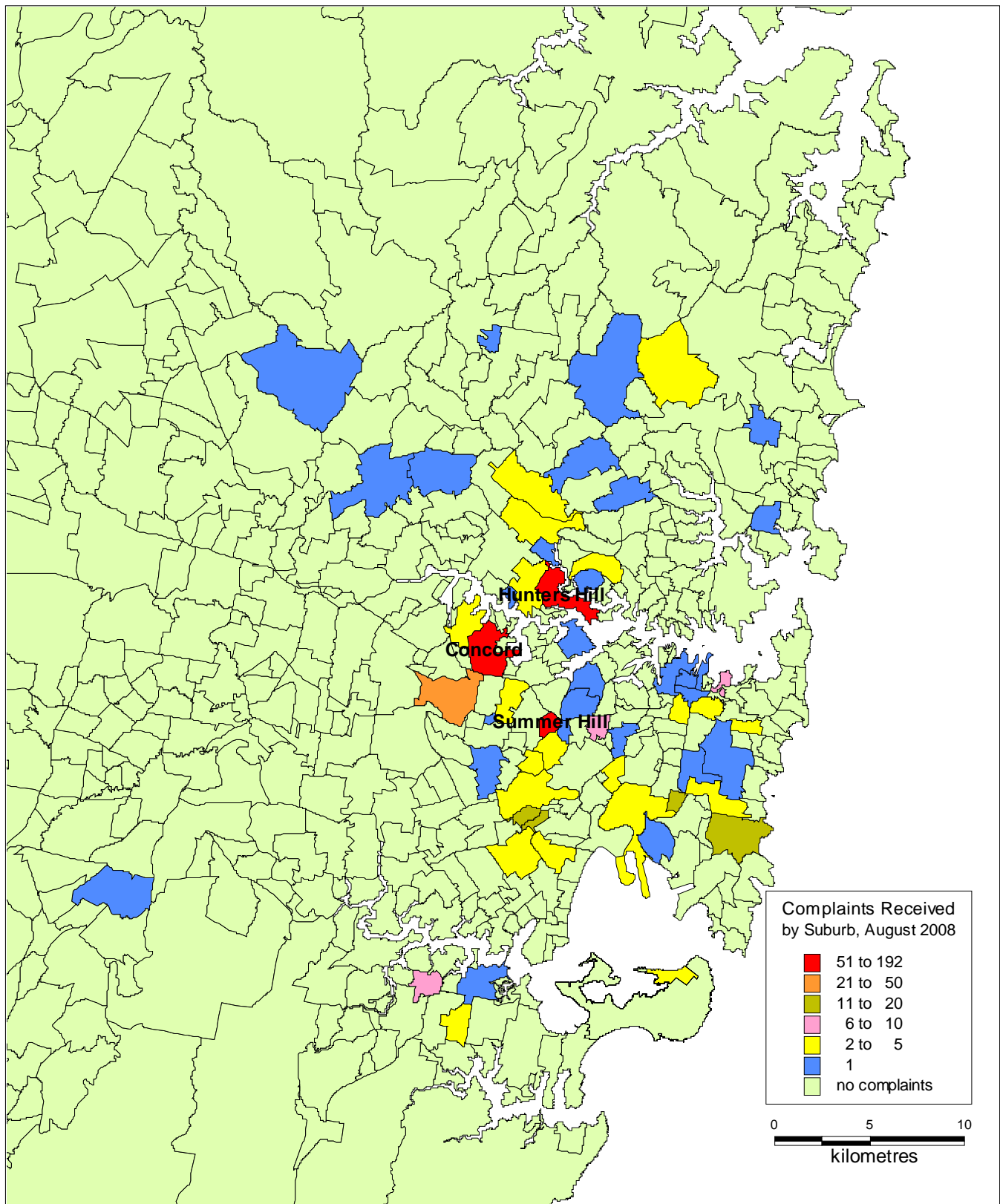


Top Complaint Suburbs – 1 August to 31 August 2008



Complaint Density by Suburb

1 August to 31 August 2008



Recorded Complaints vs Complainants, by Suburb

1 August to 31 August 2008

<i>SUBURB</i>	<i>COMPLAINTS</i>	<i>COMPLAINANTS</i>	<i>SUBURB</i>	<i>COMPLAINTS</i>	<i>COMPLAINANTS</i>
Not Specified	11	6	Kings Cross	3	3
Balgowlah	1	1	Kingsford	2	2
Bardwell Park	11	3	Kurnell	2	2
Bardwell Valley	13	1	Lane Cove	2	1
Beacon Hill	1	1	Leichhardt	1	1
Belrose	2	1	Lewisham	1	1
Bexley	3	3	Lilyfield	1	1
Bondi Junction	2	2	Macquarie Park	4	2
Botany	1	1	Maroubra	11	5
Burwood Heights	1	1	Mascot	3	3
Campsie	1	1	Newtown	1	1
Carlingford	1	1	North Ryde	2	2
Castle Hill	1	1	Paddington	5	5
Concord	63	2	Potts Point	1	1
Concord West	4	2	Randwick	1	1
Croydon	4	2	Riverview	1	1
Darling Point	6	2	Rockdale	2	1
Darlinghurst	1	1	Roseville	1	1
Drummoyne	1	1	St Ives	1	1
Dulwich Hill	2	1	St Peters	3	3
Earlwood	2	1	Stanmore	6	1
East Ryde	1	1	Strathfield	24	2
Eastlakes	11	3	Summer Hill	192	5
Epping	1	1	Surry Hills	2	2
Gladesville	4	4	Sydney	1	1
Glenfield	1	1	Sylvania	1	1
Gymea	2	2	Telopea	1	1
Hunters Hill	55	8	Tennyson	1	1
Hurlstone Park	3	1	Tennyson Point	1	1
Jannali	6	1	Waitara	1	1
Kensington	1	1	Woolloomooloo	1	1
Killara	1	1			
Total Complaints	497		Total Complainants		114

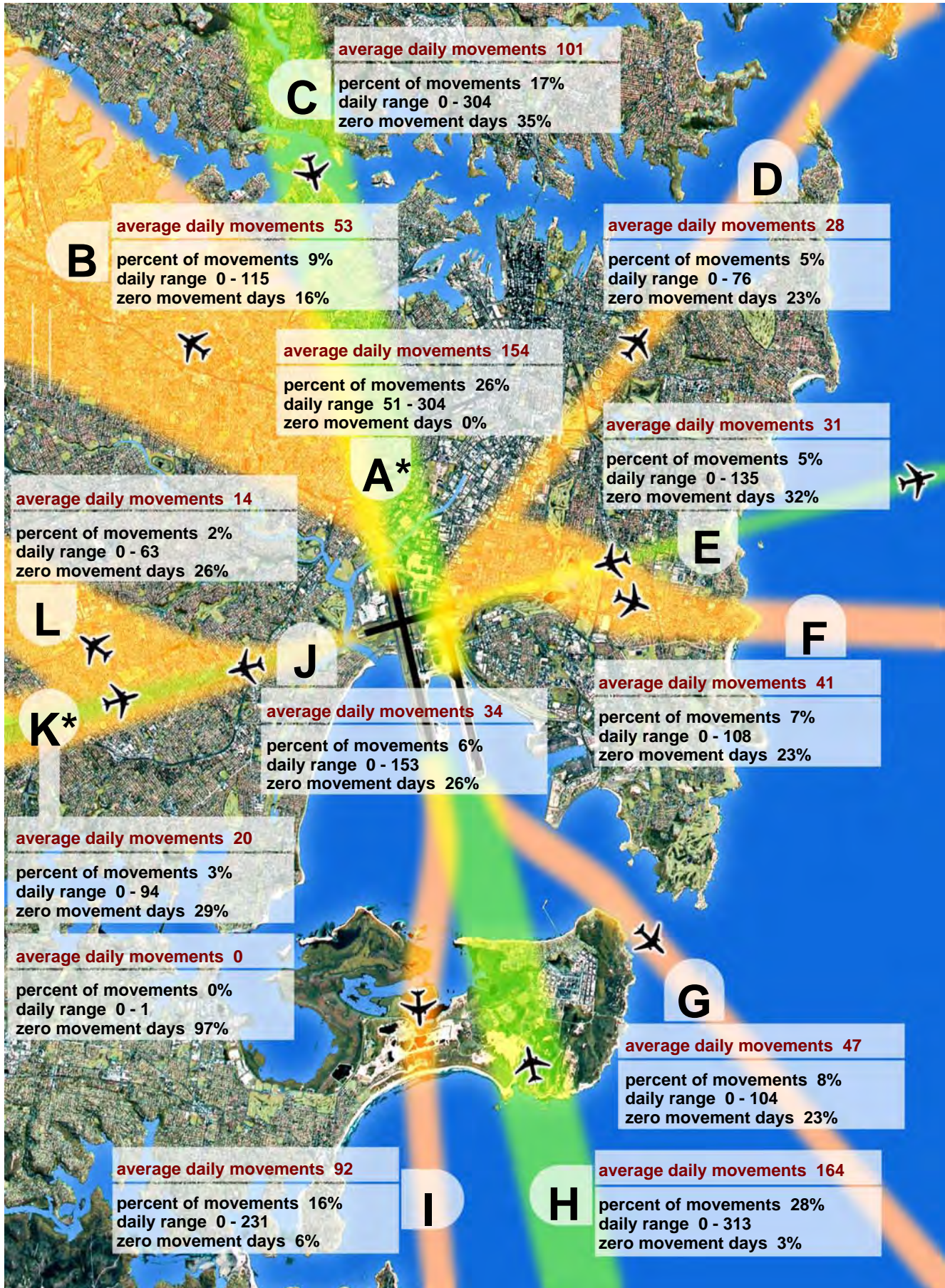
Recorded Complaints vs Complainants, by Locations/Airports Other than Sydney (NSW Only)

1 August to 31 August 2008

<i>SUBURB</i>	<i>COMPLAINTS</i>	<i>COMPLAINANTS</i>	<i>SUBURB</i>	<i>COMPLAINTS</i>	<i>COMPLAINANTS</i>
Bankstown	8	7	Not Specified	1	1
Albury	3	2	Orange	1	1
Byron Bay	1	1	Paddington	1	1
Casino	1	1	Port Macquarie	1	1
Catherine Hill Bay	1	1	Sydney	1	1
Coffs Harbour	1	1	Tabulam	2	1
East Sydney	1	1	Telegraph Point	1	1
Fingal Head	3	2	Vaucluse	1	1
Mullumbimby	2	2	Wauchope	1	1
Total Complaints	31		Total Complainants		27

Sydney Airport : Jet Flight Path Movements

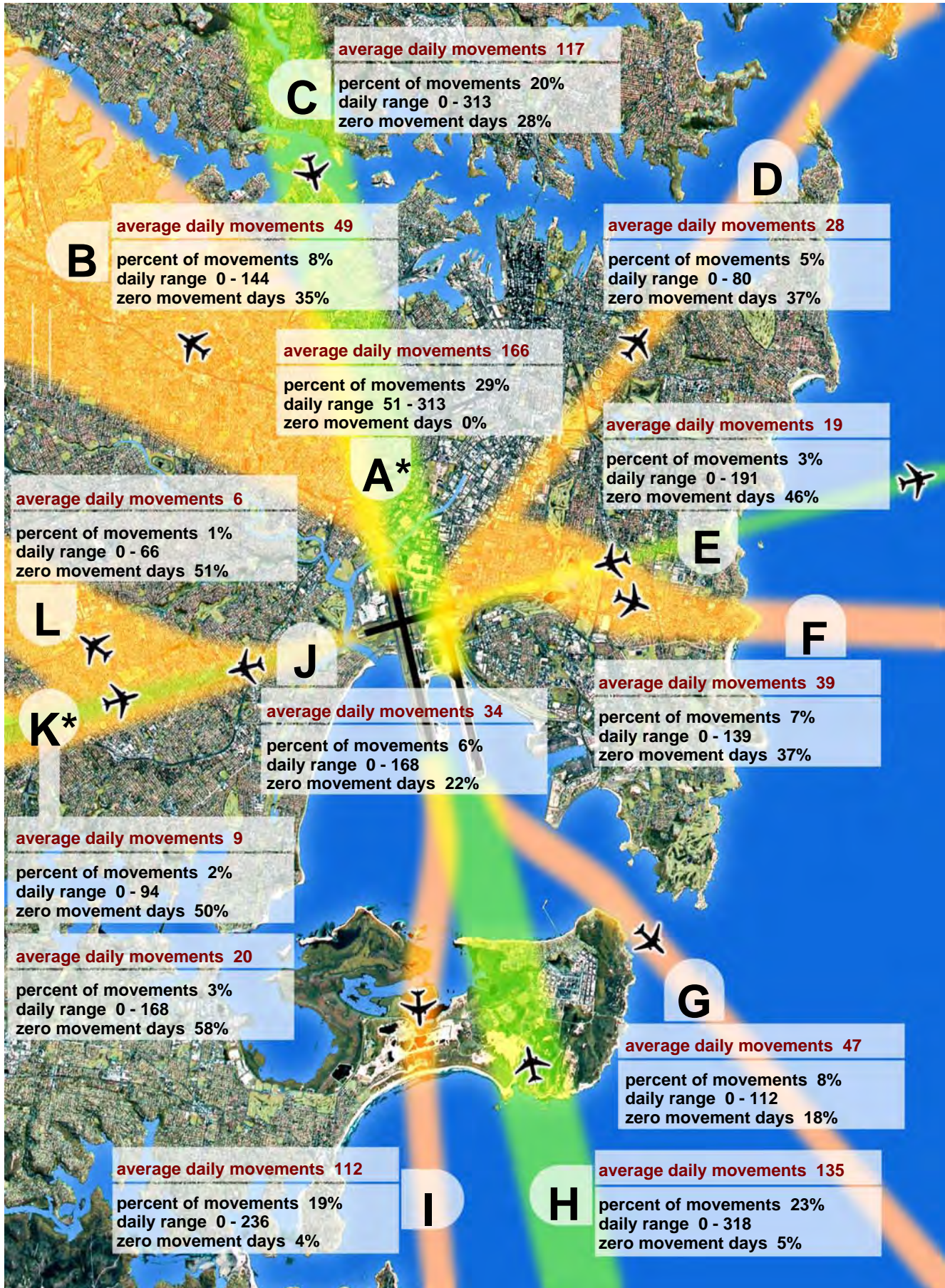
1 Aug 2008 to 31 Aug 2008, All Jets



Note : Track A* is Tracks B and C combined. Track K* shows departures (top box) and arrivals (bottom box).

Sydney Airport : Jet Flight Path Movements

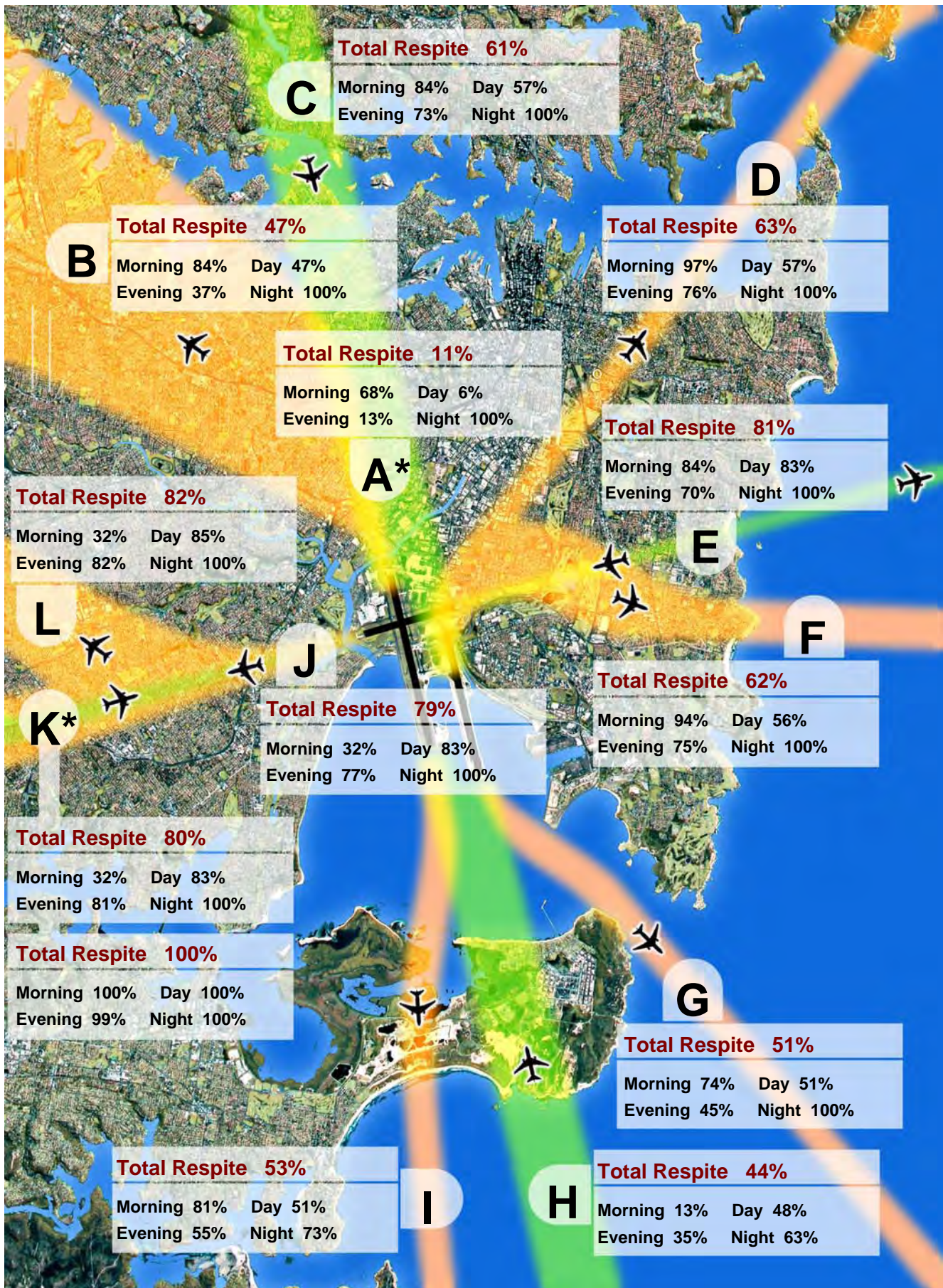
1 Sept 2007 to 31 Aug 2008, All Jets



Note : Track A* is Tracks B and C combined. Track K* shows departures (top box) and arrivals (bottom box).

Sydney Airport : Jet Aircraft Respite (R60)

1 Aug 2008 to 31 Aug 2008, All Jets



Note : Track A* is Tracks B and C combined. Track K* shows departures (top box) and arrivals (bottom box).

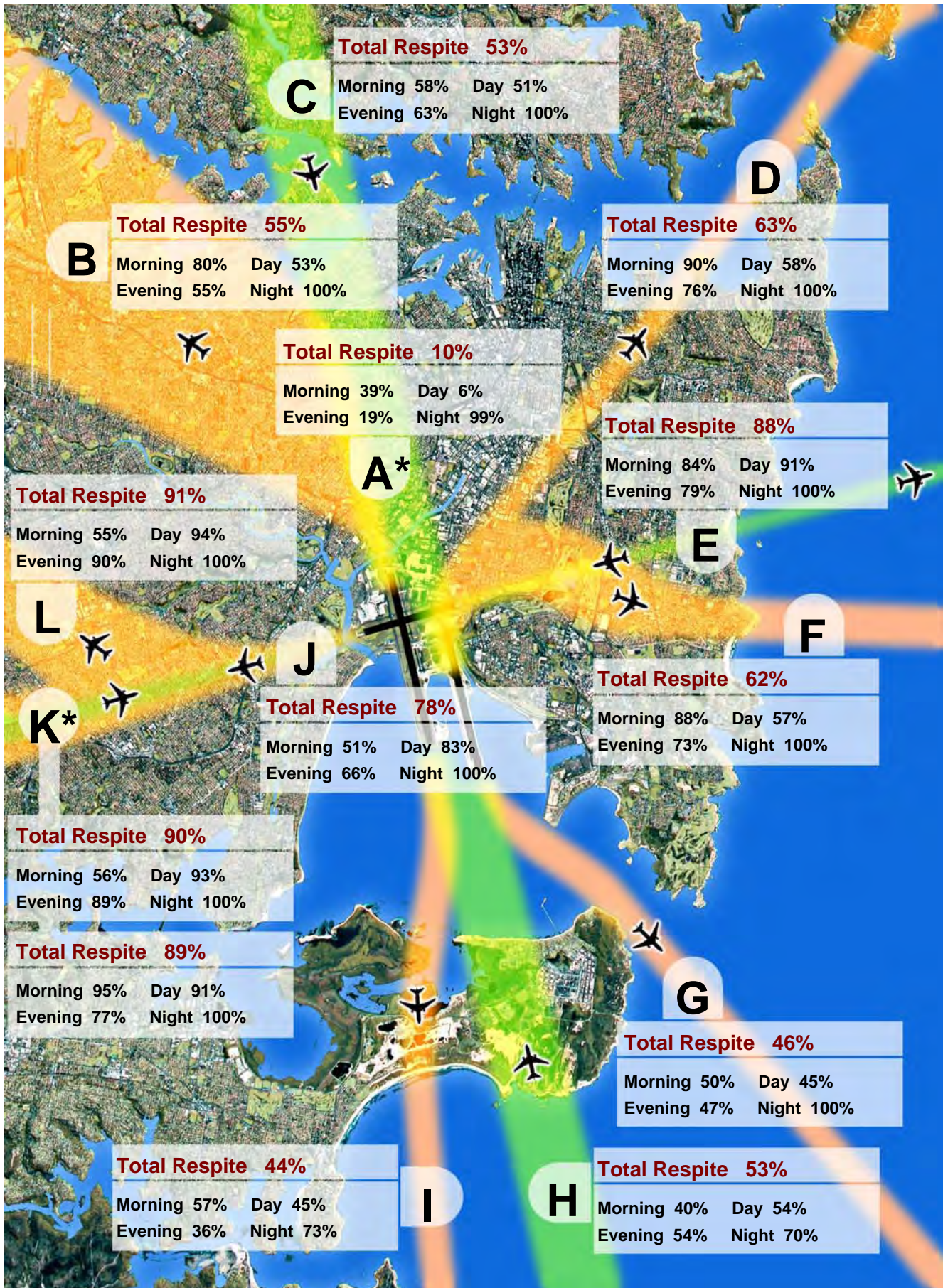
A respite interval is a 60 minute period when there are no jet movements (R60).

Morning: 06:00 to 07:00 Day: 07:00 to 20:00 Evening: 20:00 to 23:00 Night: 23:00 to 06:00

Total Respite: 06:00 to 23:00

Sydney Airport : Jet Aircraft Respite (R60)

1 Sept 2007 to 31 Aug 2008, All Jets



Note : Track A* is Tracks B and C combined. Track K* shows departures (top box) and arrivals (bottom box).

A respite interval is a 60 minute period when there are no jet movements (R60).

Morning: 06:00 to 07:00 Day: 07:00 to 20:00 Evening: 20:00 to 23:00 Night: 23:00 to 06:00

Total Respite: 06:00 to 23:00

Sydney Airport - Jet Flight Path Movements (Explanation)

The flight path bands depicted in the diagram are indicative only and are used to illustrate how the noise is being shared. Some flight tracks will be outside the bands indicated.

- The diagram shows only jet flight tracks and movements. Propeller flight tracks and movements are not shown.
- Percentages and average daily movement numbers have been rounded.
- The information presented in the movements and respite summary statistics sheets is derived from preliminary Aviation Data Processor data and is subject to change.

	Description	Notes
A	Inner north	
	Arrivals from and departures to the north (L16L, L16R, D34L)	
B	North-west	Area mainly gets overflights (departures) from Mode 9 . Due to seasonal changes in wind patterns the highest use of this Mode was in March 2008 .
	Departures off runway 34L	
C	North shore	Area mainly gets overflights (arrivals) from Mode 10 . Due to seasonal changes in wind patterns the highest use of this Mode was in April 2008 .
	Arrivals from the north on runways 16L and 16R	
D	North-east	Area gets overflights (departures) from Mode 9 . Due to seasonal changes in wind patterns the highest use of this Mode was in March 2008 .
	Departures off runway 34R to the north-east	
E	East - Coogee	Area mainly gets overflights (arrivals) from Mode 5 . Due to seasonal changes in wind patterns the highest use of this Mode was in May 2007 .
	Arrivals on runway 25 and departures from runway 07	
F	East - Maroubra	Area gets overflights (departures) from Mode 9 . Due to seasonal changes in wind patterns the highest use of this Mode was in March 2008 .
	Departures from runway 34R that turn hard east	
G	South - Botany Bay Heads	
	Departures from runway 16L	
H	South - Kurnell Peninsula	Area gets overflights (arrivals) from Modes 9 & 7. Due to seasonal changes in wind patterns the highest use of Mode 9 was in March 2008 and Mode 7 was in July 2007 .
	Arrivals on runways 34L and 34R	
I	South - Kurnell sand hills	
	Departures from runway 16R	
J	West	Area mainly gets overflights from Modes 7 & 8 (departures) and Mode 14A (arrivals). Due to seasonal changes in wind patterns the highest use of Mode 7 was in July 2007 , Mode 14A in September 2007 and Mode 8 was not used during the past 12 months.
	Arrivals on runway 07 and departures from runway 25	

Sydney Airport - Jet Aircraft Respite (R60) (Explanation)

Respite

The respite figures in the map are based on the concept of a **respite hour** being a **whole clock hour** where there are **no aircraft movements**.

Total Respite takes into account all 7 days of the week and is based on the total number of clock hours during the period 6am to 11pm, for the period **September 2007** to **August 2008**, during which there were no movements.

Morning Respite is based on the above criteria for the period 6am to 7am for all 7 days of the week.

Day Respite is based on the above criteria for the period 7am to 8pm for all 7 days of the week.

Evening Respite is based on the above criteria for the period 8pm to 11pm for all 7 days of the week.

Curfew (Night) Respite is based on the above criteria for the period 11pm to 6am for all 7 days of the week.

The percentage figure for a category of respite refers to the proportion of the total possible number of respite hours for that category for the date period. For example, the Jet Aircraft Respite Hours map (for the last rolling year) shows that **flight path D has Total Respite hours 63%**. This means that over the period **September 2007** to **August 2008** for **63%** of the total clock hours between 6am and 11pm there were no movements on that flight path.

Notes

- Propeller movements have not been taken into account.
- The information presented in the map is derived from preliminary Aviation Data Processor data and is subject to change.
- The flight path bands depicted in the map are indicative only and are used to illustrate the extent of respite in different areas. Some jet movements will be outside the bands indicated.

Measured Daily N70 Values

Description

Airservices Australia maintains and operates a Noise and Flight path Monitoring System (NFPMS) at all the major Australian airports. The Environment Services Branch at Airservices Australia's head office located in Canberra regularly reports on aircraft flight paths and noise for each major Airport. The data appearing here is a summary of the N70 noise data for Sydney airport for August 2008.



Figure 1. NMT sites about Sydney Airport and the daily N70 values for the month of August 2008.

The measured daily N70 value is the average daily number of aircraft noise events whose maximum noise level (L_{Amax}) equals or exceeds 70dBA.

The daily N70 values for the various NMTs and their positions in Sydney are displayed in Figure 1. The total number of Correlated Noise Events (CNE) and the number of days each NMT was operational during August 2008 along with the Daily N70 values for the three months up to and including August are given in Table 1.

<i>Location</i>	<i>CNE Aug</i>	<i>Operational days Aug</i>	<i>N70 Aug</i>	<i>N70 Jul</i>	<i>N70 Jun</i>
<i>Runway 34L</i>	<i>6,835</i>	<i>31.0</i>	<i>207</i>	<i>211</i>	<i>202</i>
<i>Penshurst</i>	<i>646</i>	<i>31.0</i>	<i>16</i>	<i>19</i>	<i>10</i>
<i>Bexley</i>	<i>1,150</i>	<i>31.0</i>	<i>33</i>	<i>36</i>	<i>22</i>
<i>Eastlakes</i>	<i>2,185</i>	<i>31.0</i>	<i>70</i>	<i>65</i>	<i>70</i>
<i>Coogee</i>	<i>1,360</i>	<i>31.0</i>	<i>43</i>	<i>34</i>	<i>45</i>
<i>Sydenham</i>	<i>4,280</i>	<i>31.0</i>	<i>138</i>	<i>143</i>	<i>156</i>
<i>Leichhardt</i>	<i>2,893</i>	<i>31.0</i>	<i>93</i>	<i>92</i>	<i>120</i>
<i>Kurnell</i>	<i>2,006</i>	<i>31.0</i>	<i>64</i>	<i>81</i>	<i>56</i>
<i>Annandale</i>	<i>1,887</i>	<i>31.0</i>	<i>57</i>	<i>54</i>	<i>73</i>
<i>St Peters</i>	<i>2,690</i>	<i>31.0</i>	<i>85</i>	<i>87</i>	<i>97</i>
<i>Croydon</i>	<i>313</i>	<i>31.0</i>	<i>8</i>	<i>11</i>	<i>7</i>
<i>Hunters Hill</i>	<i>2,366</i>	<i>31.0</i>	<i>40</i>	<i>37</i>	<i>53</i>

Table 1 Results for each Noise Monitoring Terminal for the three months up to and including August 2008

The N70 values for August 2008 have also been calculated for six different periods:

- Morning N70 value (AM), correlated noise events between 6:00am and 7:00am.
- Evening N70 value (PM), between 8:00pm and 11:00pm.
- Daytime N70 value (Day), between 7:00am and 8:00pm
- Night N70 value (Night), between 11:00pm and 6:00am
- Weekend Day N70 value (WE_D), between 6:00am and 11:00pm Saturday and Sunday.
- Weekend Night N70 value (WE_N), between midnight Friday to 6:00am Saturday, 11:00pm Saturday to 6:00am Sunday and 11:00pm to midnight on Sunday

These results are contained in Table 2.

Runway 34L AM 13 PM 28 Day 169 Night 12 WE_D 173 WE_N 3	Penshurst AM 4 PM 1 Day 9 Night 0 WE_D 19 WE_N 0	Bexley AM 7 PM 4 Day 18 Night 0 WE_D 41 WE_N 0	Eastlakes AM 2 PM 9 Day 60 Night 0 WE_D 68 WE_N 0
Coogee AM 2 PM 7 Day 32 Night 0 WE_D 47 WE_N 0	Sydenham AM 2 PM 16 Day 127 Night 0 WE_D 121 WE_N 0	Leichhardt AM 2 PM 10 Day 84 Night 0 WE_D 85 WE_N 1	Kurnell AM 3 PM 6 Day 59 Night 0 WE_D 55 WE_N 0
Annandale AM 1 PM 4 Day 58 Night 0 WE_D 43 WE_N 1	St Peters AM 1 PM 9 Day 82 Night 0 WE_D 70 WE_N 0	Croydon AM 0 PM 1 Day 8 Night 0 WE_D 6 WE_N 0	Hunters Hill AM 1 PM 4 Day 37 Night 0 WE_D 34 WE_N 0

Table 2. N70 values for the different periods of the day.

Due to normal maintenance activities and occasional upgrading of the system any one NMT may not have been operational for the entire sample period. As a result the average at each NMT is performed only for the period in which the NMT was operating; this ensures the daily N70 figure is not influenced by NMT downtime.

DISCLAIMER

The Sydney Airport Operational Statistics report contains a summary of data collected over the specified period and is intended to convey the best information available at the time from the Noise and Flight Path Monitoring System (NFPMS), Aviation Data Processor (ADP), Noise Complaint Monitoring System (NCMS) and Transparent Noise Information Package (TNIP). These system databases and programs are to some extent dependent upon external sources and errors may occur. All care is taken in preparation of the report but its complete accuracy cannot be guaranteed. Airservices Australia does not accept any legal liability for any losses arising from reliance upon data in this report which may be found to be inaccurate.